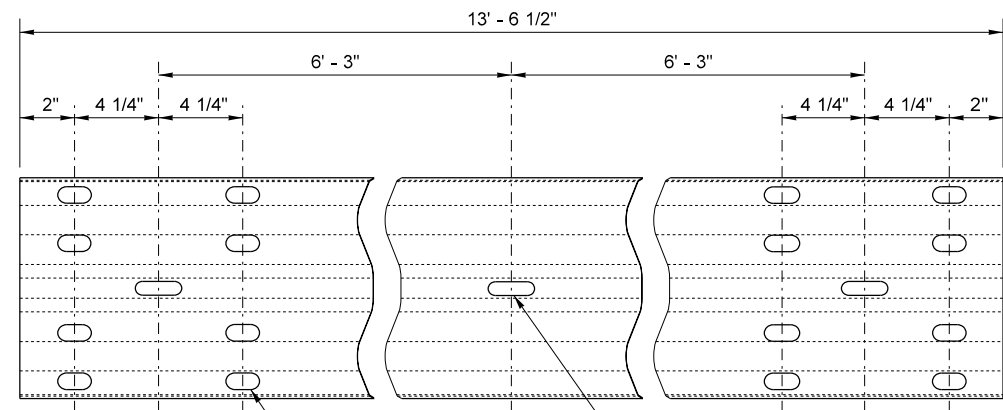


- NOTES**
1. WHEN REQUIRED BY THE CONTRACT, A SNOW LOAD POST WASHER SHALL BE USED ON THE BACKSIDE OF THE POST (IN LIEU OF THE 1 3/4" (IN) POST BOLT WASHER) AND A SNOW LOAD RAIL WASHER SHALL BE PLACED ON THE FACE SIDE OF BEAM GUARDRAIL TYPES 1 AND 2. SNOW LOAD RAIL WASHERS SHALL NOT BE INSTALLED ON TERMINALS.
 2. RAIL WASHERS, ALSO CALLED "SNOW LOAD RAIL WASHERS", ARE NOT REQUIRED ON NEW INSTALLATION, EXCEPT AS CALLED FOR IN NOTE 1. UNNECESSARY RAIL WASHERS NEED NOT BE REMOVED FROM EXISTING INSTALLATIONS, EXCEPT THOSE ON POSTS 2 THROUGH 8 OF A BCT INSTALLATION SHALL BE REMOVED.
 3. BEAM GUARDRAIL POST SPACING FOR TYPES 1 THROUGH 4 SHALL BE 6' - 3" ON CENTERS.
 4. TIMBER BLOCKS SHALL BE TOE-NAILED TO THE POST WITH A 16D GALVANIZED NAIL TO PREVENT BLOCK ROTATION.
 5. FOR POST AND BLOCK DETAILS, SEE **STANDARD PLAN C-1B**.
 6. WHEN "BEAM GUARDRAIL TYPE - FT. LONG POST" IS SPECIFIED IN THE CONTRACT, THE POST LENGTH SHALL BE STAMPED WITH NUMBERS, 1/2" (IN) MIN. HIGH AND 3/4" (IN) WIDE AT THE LOCATION WHERE THE LETTER "H" IS SHOWN IN THE ASSEMBLY DETAIL. FOR WOOD POST APPLICATIONS, THE LETTER SHALL BE STAMPED TO A MINIMUM DEPTH OF 1/4" (IN). FOR STEEL POST APPLICATIONS, THE LETTER SHALL BE LEGIBLE AFTER THE POST IS GALVANIZED. AFTER POST INSTALLATION, IT SHALL BE THE CONTRACTOR'S RESPONSIBILITY TO ENSURE THE STAMPED NUMBERS REMAIN VISIBLE.
 7. EXISTING POSTS SHALL NOT BE RAISED. REPLACE POSTS AS NECESSARY TO ACHIEVE REQUIRED GUARDRAIL HEIGHT.
 8. HOLES SHALL BE LOCATED ON APPROACHING TRAFFIC SIDE OF WEB.

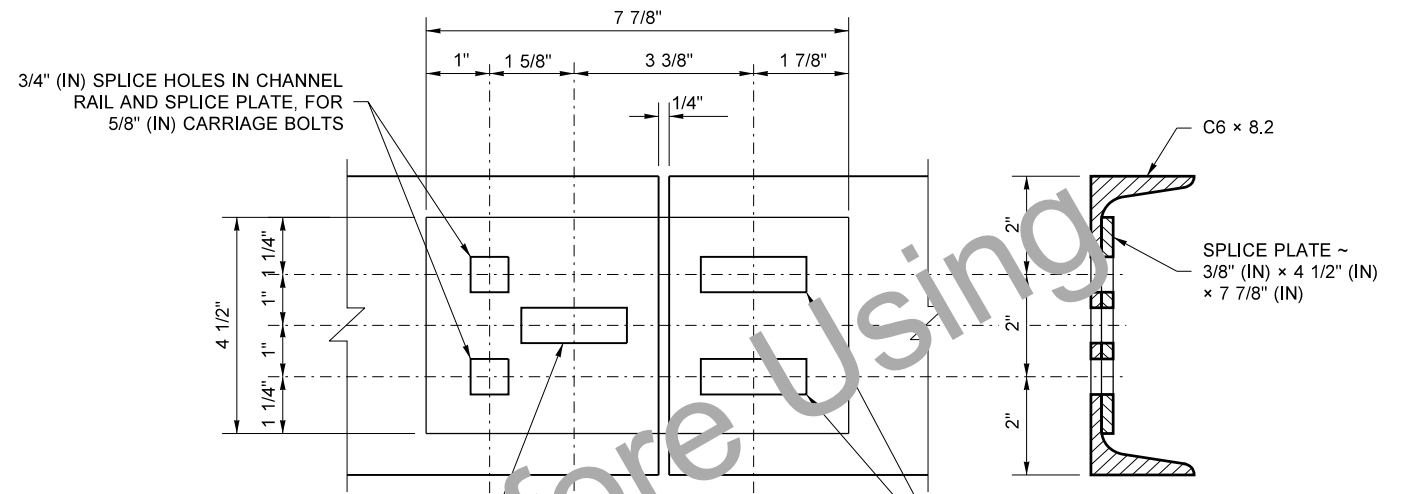
BEAM GUARDRAIL TYPES 1 - 4 (W-BEAM)

FILE NAME	S:\Design R P & S\4-Standards\2-Plan Sheet Library\02-PSL Work in Progress\C series conversion\TB-c1\TB-c1.dgn			REGION NO.	STATE	FED.AID PROJ.NO.	Washington State Department of Transportation	Plot 1
TIME	3:32:07 PM			10	WASH			PLAN REF NO TB-C1
DATE	8/1/2018			JOB NUMBER				SHEET 1 OF 2 SHEETS
PLOTTED BY	liddelf			CONTRACT NO.		LOCATION NO.		
DESIGNED BY								
ENTERED BY								
CHECKED BY								
PROJ. ENGR.								
REGIONAL ADM.	REVISION	DATE	BY					



SPLICE BOLT SLOTS ~ 29/32" (IN) x 1 1/8" (IN) (TYP.)
 POST BOLT SLOT ~ 3/4" (IN) x 2 1/2" (IN) (TYP.)

TYPICAL RAIL ELEMENT



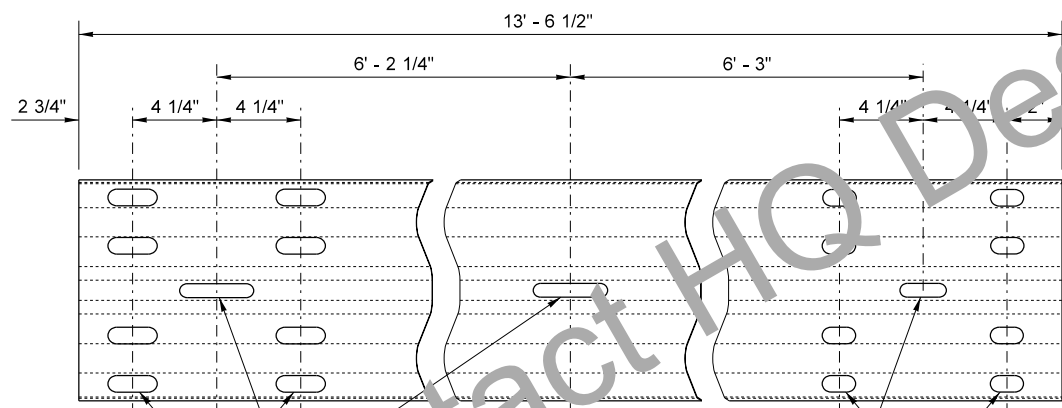
3/4" (IN) SPLICE HOLES IN CHANNEL RAIL AND SPLICE PLATE, FOR 5/8" (IN) CARRIAGE BOLTS

3/4" (IN) x 2" (IN) POST BOLT SLOT IN CHANNEL RAIL AND SPLICE PLATE, FOR 5/8" (IN) BUTT ON HEAD BOLT W/ 7/32" (IN) DIA. GRIP AND RECESSED NUT

3/4" (IN) x 2" (IN) SPLICE SLOT IN CHANNEL RAIL & SPLICE PLATE, FOR 5/8" (IN) CARRIAGE BOLT, HEX NUT & WASHER

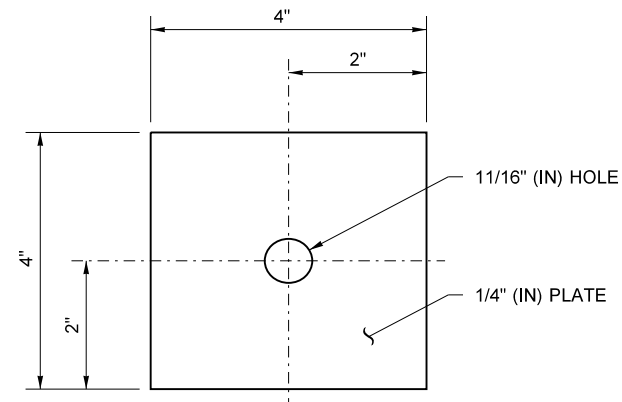
SPLICE PLATE ~ 3/8" (IN) x 4 1/2" (IN) x 7 7/8" (IN)

CHANNEL RAIL SPLICE

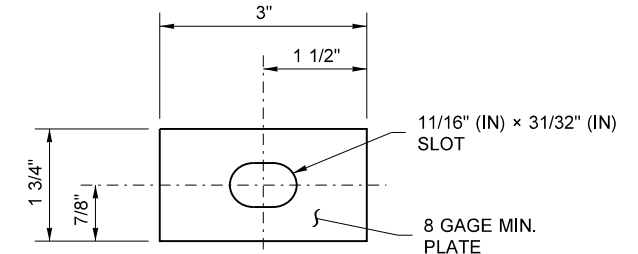


SPLICE BOLT SLOTS ~ 29/32" (IN) x 2" (IN) (TYP.)
 POST BOLT SLOTS ~ 3/4" (IN) x 3 3/4" (IN)
 POST BOLT SLOT ~ 3/4" (IN) x 2 1/2" (IN)
 SPLICE BOLT SLOTS ~ 29/32" (IN) x 1 1/8" (IN) (TYP.)

EXPANSION SECTION



SNOW LOAD POST WASHER
SEE NOTE 1



SNOW LOAD RAIL WASHER
SEE NOTES 1 & 2

BEAM GUARDRAIL TYPES 1 - 4 (W-BEAM)

FILE NAME: S:\Design R P & S\4-Standards\2-Plan Sheet Library\02-PSL Work in Progress\C series conversion\TB-c1\TB-c1.dgn		REGION NO. STATE		FED.AID PROJ.NO.		DATE		P.E. STAMP BOX		Plot 2	
TIME: 3:32:38 PM		10	WASH							PLAN REF NO	
DATE: 8/1/2018										TB-C1	
PLOTTED BY: liddelf		JOB NUMBER		LOCATION NO.		DATE		P.E. STAMP BOX		SHEET	
DESIGNED BY:										2	
ENTERED BY:										OF	
CHECKED BY:										2	
PROJ. ENGR.:										SHEETS	
REGIONAL ADM.:		REVISION	DATE	BY							

