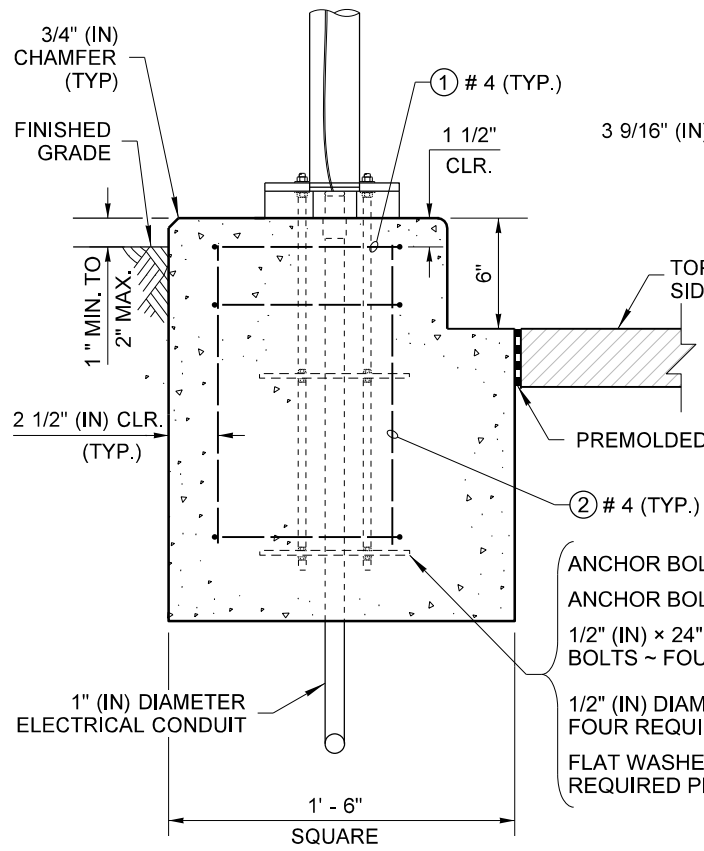
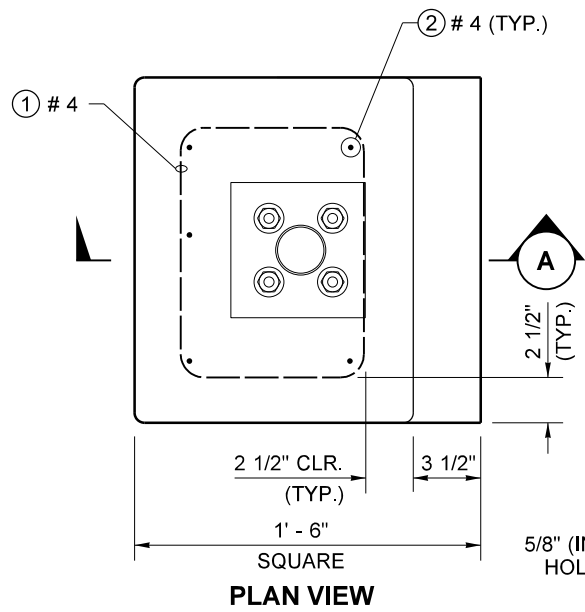
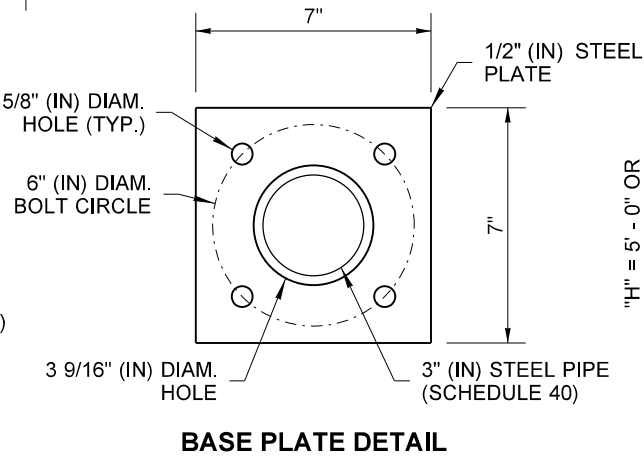
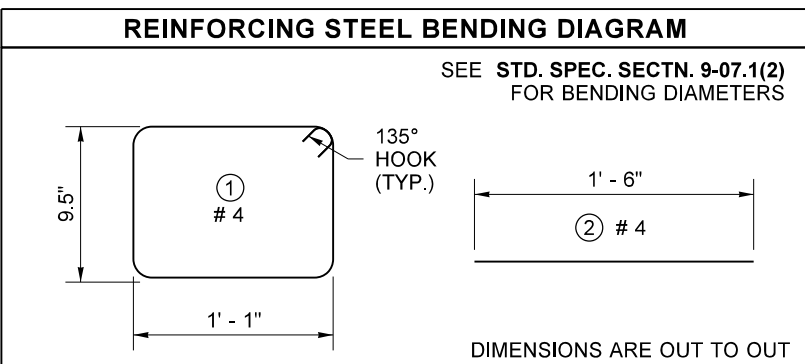


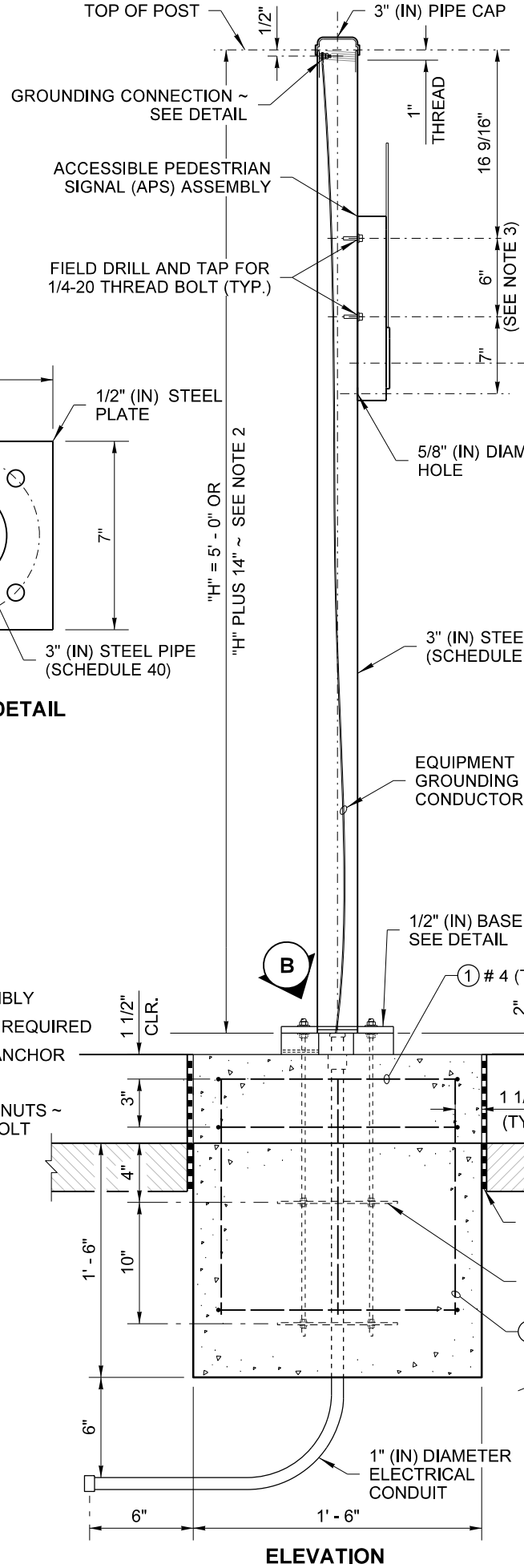
DRAWN BY: FERN LIDDELL



**SECTION A**



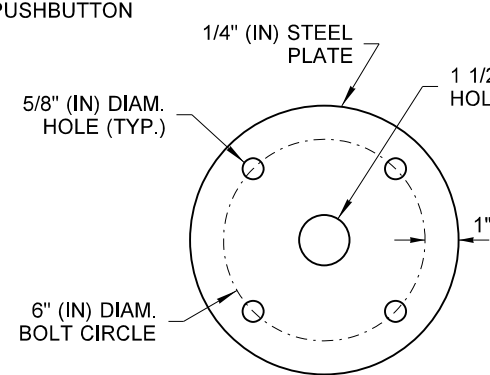
**BASE PLATE DETAIL**



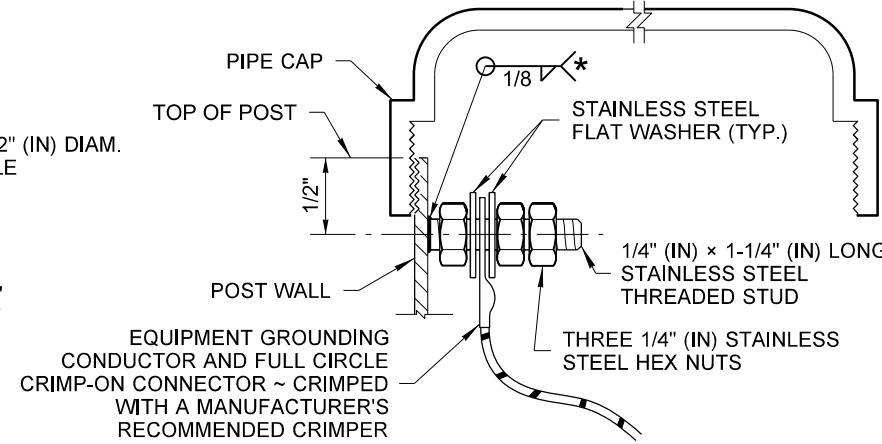
**ELEVATION**

**TYPE PPB STANDARD DETAILS**

- NOTES**
1. See **Standard Plan J-20.26** for Accessible Pedestrian Pushbutton details.
  2. Where shown in the plans, install plaque (R10-32P) "PUSH BUTTON FOR 2 SECONDS FOR EXTRA CROSSING TIME" above the Accessible Pedestrian Signal (APS) assembly. Add 14" (in) to the PPB post height to accommodate plaque and leave a 2" (in) space between signs.
  3. Mounting distances vary between manufacturers. See manufacturers recommendations for mounting information.
  4. Junction Box serving the Standard shall preferably be located 5' - 0" (10' - 0" Max.) from the Standard.
  5. Supplemental Grounding Conductor shall be non-insulated #4 AWG stranded copper and shall be clamped to vertical rebar with a connector suitable for use embedded in concrete: Provide 3' - 0" min. slack. Attach to pole grounding stud with a full circle crimp-on connector (crimped with a manufacturer recommended crimper).
  6. Two button installation may require adaptor(s).



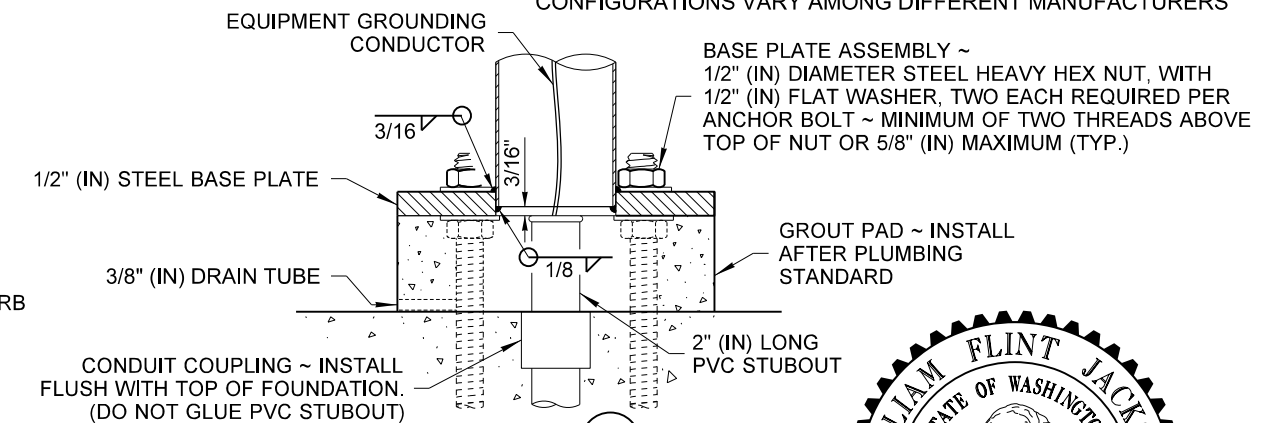
**ANCHOR BOLT TEMPLATE**



**GROUNDING CONNECTION DETAIL**

\* WELD STUD TO POLE WALL TO MAXIMUM EXTENT POSSIBLE ~ 1/2" (IN) MINIMUM WELD

CONFIGURATIONS VARY AMONG DIFFERENT MANUFACTURERS



**SECTION B**

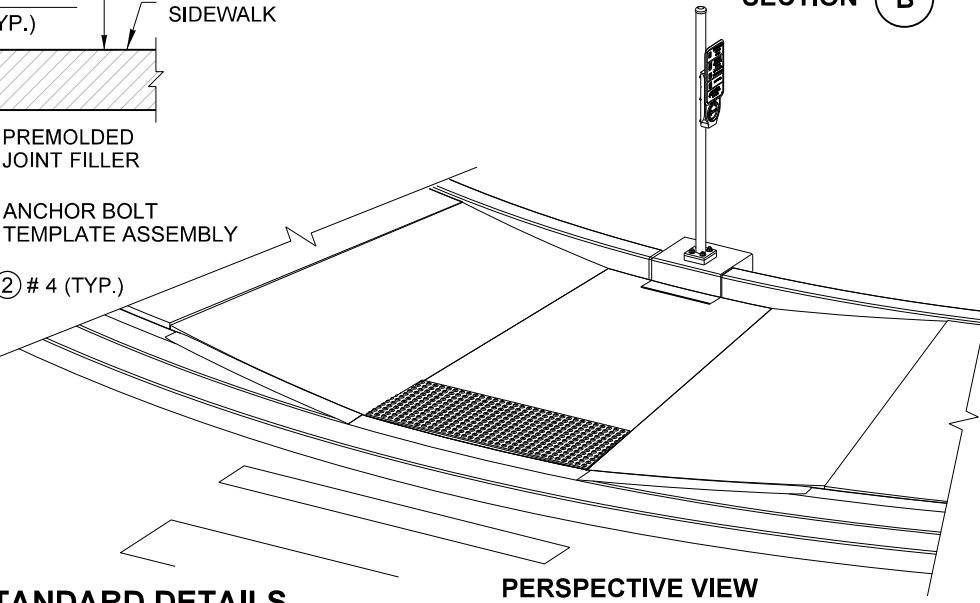


**ACCESSIBLE PEDESTRIAN  
PUSHBUTTON WITH  
CURB BASE  
STANDARD PLAN J-20.11-03**

SHEET 1 OF 2 SHEETS

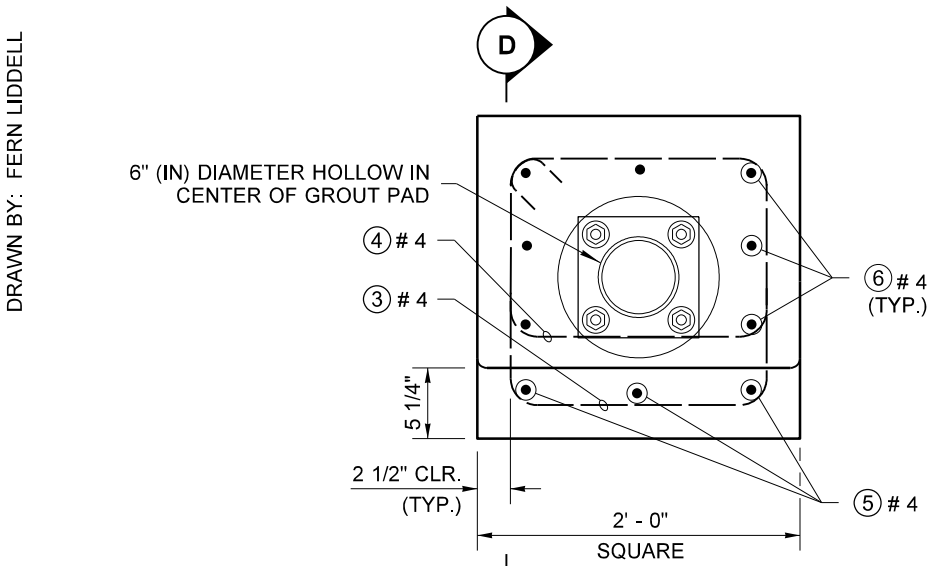
APPROVED FOR PUBLICATION

STATE DESIGN ENGINEER  
Washington State Department of Transportation

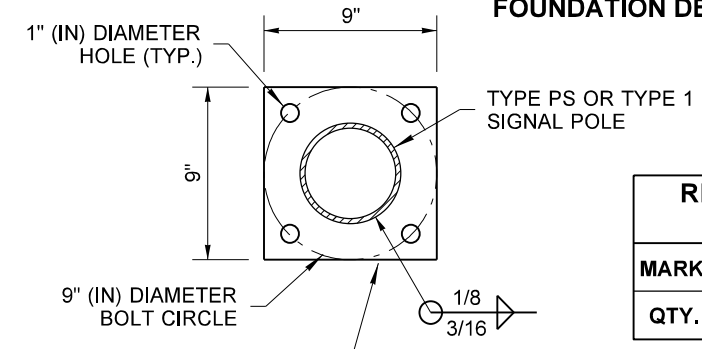


**PERSPECTIVE VIEW**

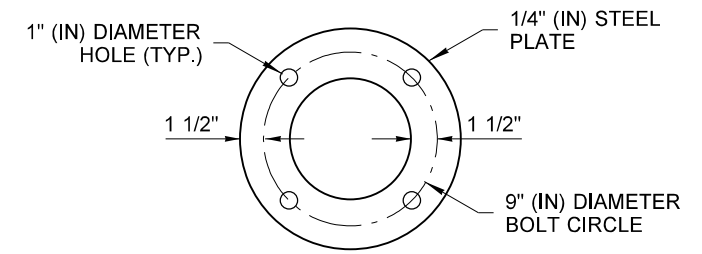
DRAWN BY: FERN LIDDELL



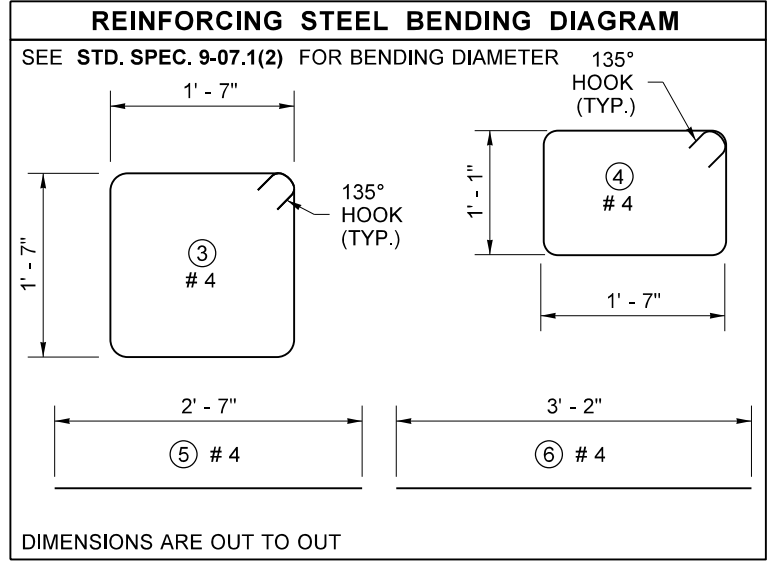
**PLAN VIEW FOUNDATION DETAILS**



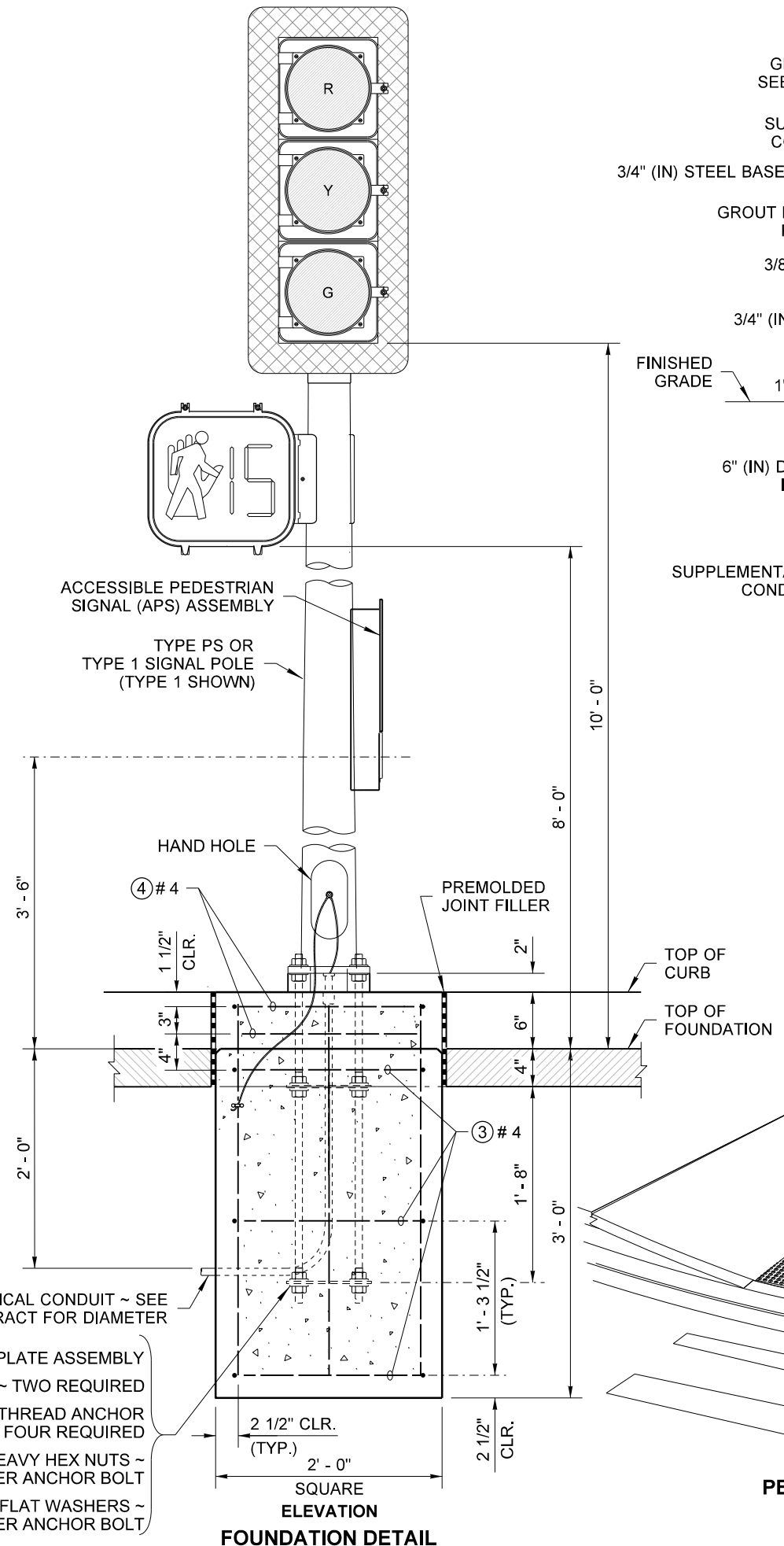
**BASE PLATE DETAIL**



**ANCHOR BOLT TEMPLATE**

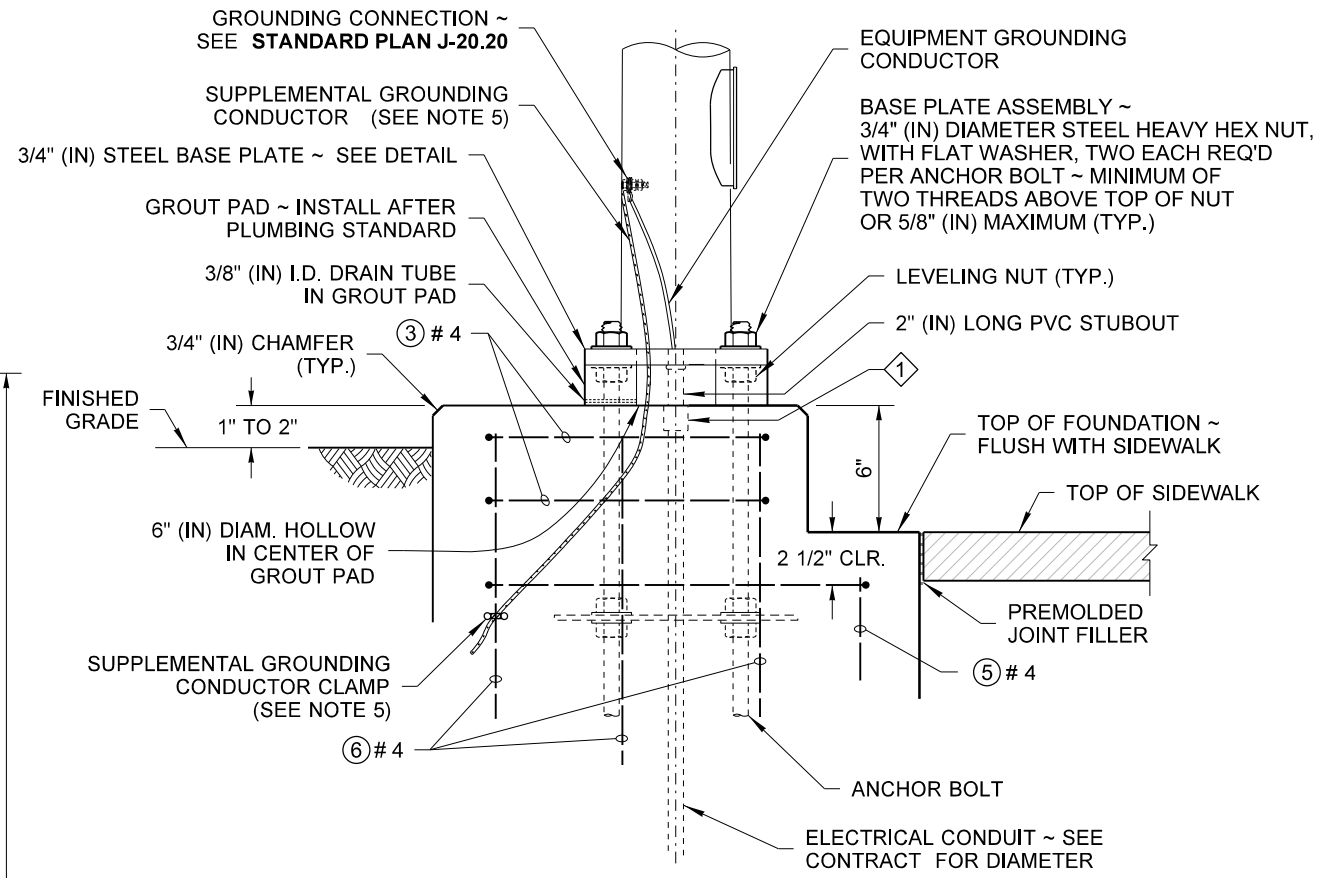


REINFORCING STEEL QUANTITIES LIST				
MARK	③	④	⑤	⑥
QTY.	3	2	3	7



**FOUNDATION DETAIL**

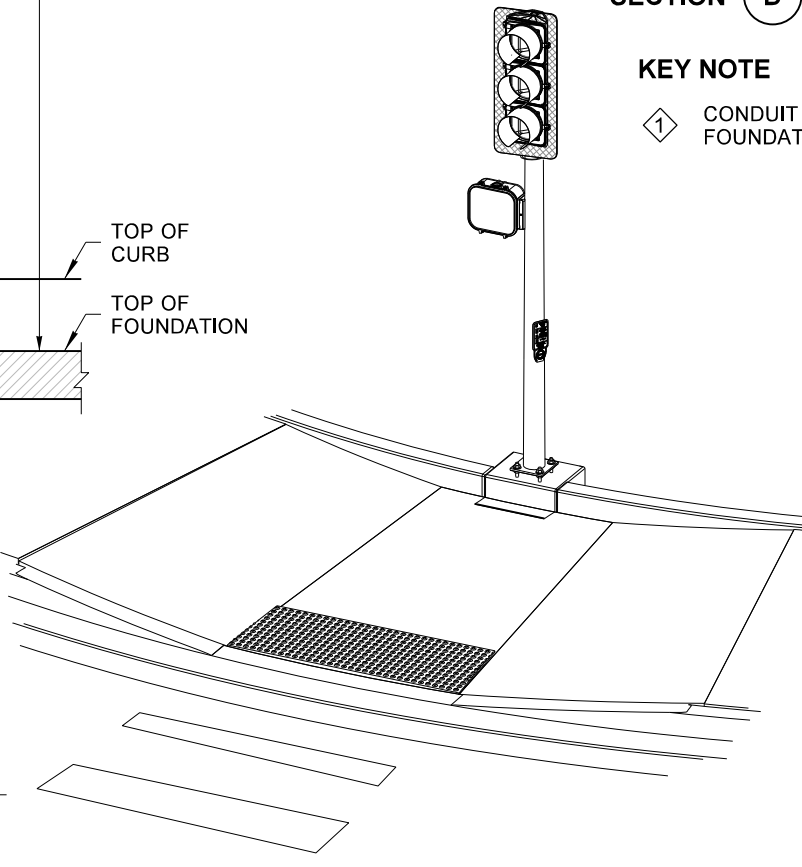
**TYPE 1 SIGNAL STANDARD DETAILS**



**SECTION D**

**KEY NOTE**

① CONDUIT COUPLING ~ INSTALL FLUSH WITH TOP OF FOUNDATION. (DO NOT GLUE PVC STUBOUT)



**ACCESSIBLE PEDESTRIAN PUSHBUTTON WITH CURB BASE**  
**STANDARD PLAN J-20.11-03**

SHEET 2 OF 2 SHEETS

APPROVED FOR PUBLICATION