

**STRUCTURAL NOTES**

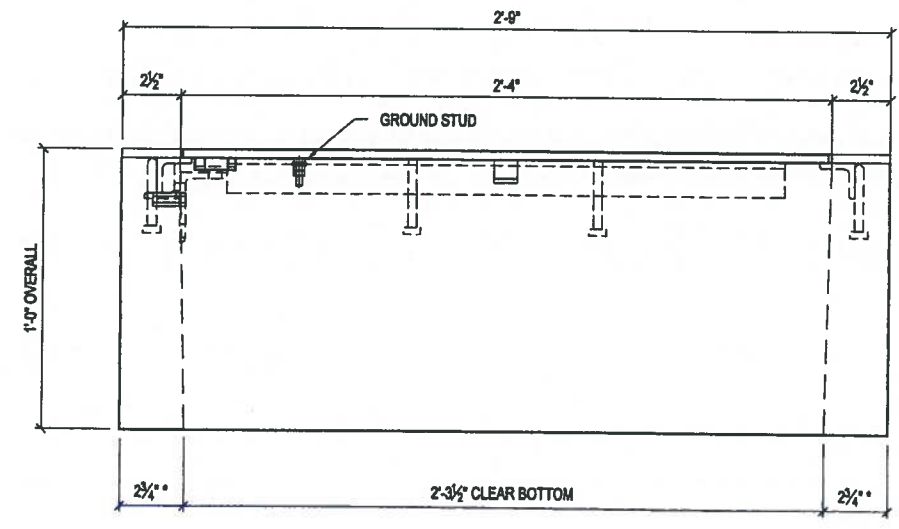
1. CONCRETE: 28 DAY COMPRESSIVE STRENGTH  $f_c = 4,000$  psi
2. STEEL SHAPES: ASTM A-36 STRUCTURAL STEEL STANDARDS
3. WWF: ASTM A-185 GRADE 65 (AASHTO M55)
4. DESIGN: ACI-318-11 BUILDING CODE
5. LOADS: ASTM C-857 "MINIMUM STRUCTURAL DESIGN LOADING FOR UNDERGROUND PRECAST CONCRETE UTILITY STRUCTURES" 22,500 LBS TEST LOAD ACTING OVER A 10" X 10" AREA 40 psf E.F.P. LATERAL SOIL PRESSURE 113 psf LIVE LOAD SURCHARGE TOP OF JUNCTION BOX AT FINISHED GRADE WATERTABLE BELOW BOTTOM OF JUNCTION BOX (ASSUMED)

SHIPPING WEIGHT  
300 LBS

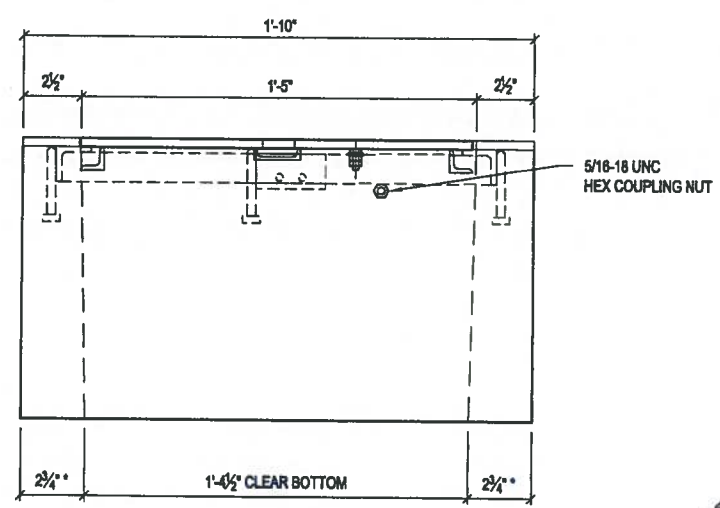
**PLAN VIEW**

**APPROVED**  
Washington State Department of Transportation  
HQ Traffic Operations Office  
BY: *[Signature]* DATE: *12/6/2018*

**DOOR/FRAME ASSEMBLY DETAIL**



**VIEW A**



**VIEW B**

\* WALL THICKNESS WITH 1/2" DRAFT SHOWN.  
ACTUAL WALL DIMENSION 2 1/2 x 3/4"



THIS DOCUMENT IS THE PROPERTY OF OLDCASTLE PRECAST, INC. IT IS CONFIDENTIAL, SUBMITTED FOR REFERENCE PURPOSES ONLY, AND SHALL NOT BE USED IN ANY WAY RELIABLE TO THE INTERESTS OF, OR WITHOUT THE WRITTEN PERMISSION OF OLDCASTLE PRECAST, INC. COPYRIGHT © 2018 OLDCASTLE PRECAST, INC. ALL RIGHTS RESERVED.

**TYPE 2 JUNCTION BOX w/ DP FRAME - WSDOT**  
CUSTOMER LAYOUT

STANDARD PRODUCT					
CUSTOMER					
DATE 4/5/18	SALES CJC	DRAWN CJC	ENGINEER	CHECKED	SALES ORDER
DRAWING NUMBER 010-0650115-001				REVISION A REV DATE 4/20/18	SHEET 1 OF 3

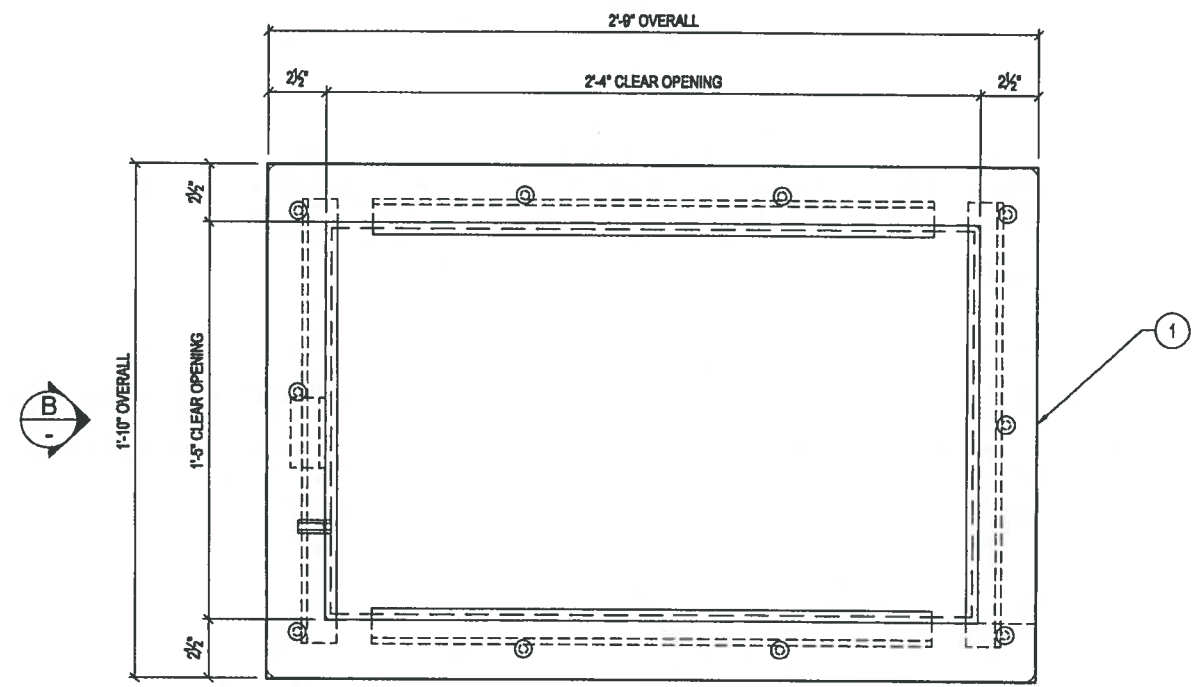
REVISION	DESCRIPTION	BY
A	REVISED BOLT DOWN COVER CALLOUT IN PLAN VIEW TO DP	CJC

PRODUCT WEIGHT  
210 LBS

SHOP NOTES

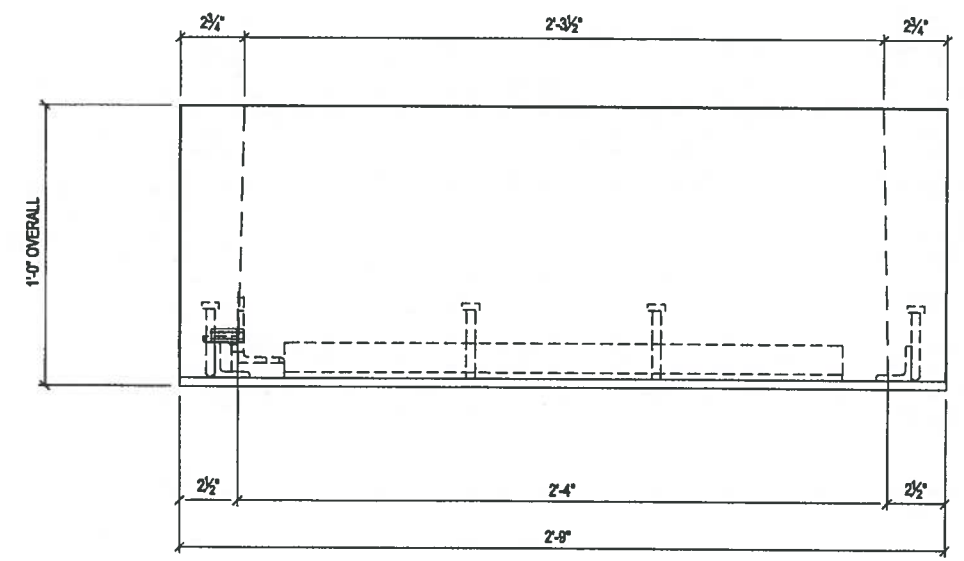
1. USE "TYPE 2 JUNCTION BOX" STEEL FORM
2. CONCRETE FINISH: FLAT FLOAT FINISH WITH MACHINED EDGES

BILL OF MATERIALS			
#	QUANTITY	DESCRIPTION	ITEM #
	0.05 yds	CONCRETE MIX - SCC	5010000
	6.67 sqf	MESH - (SQUARE FEET)	5500000
1	1 ea	TYPE 2 DP FRAME - WSDOT	2880300

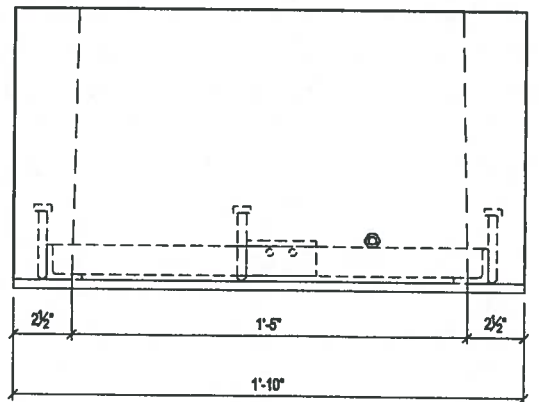


**A**  
PLAN VIEW  
LAYOUT (SHOWN AS POURED)

**APPROVED**  
Washington State Department of Transportation  
HQ Traffic Operations Office  
BY: [Signature] DATE: 12/6/2018

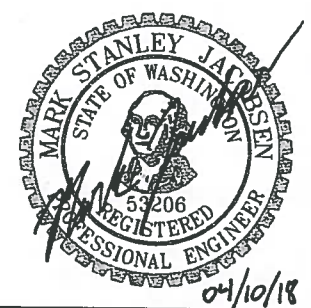


VIEW A



VIEW B

REVISION	DESCRIPTION	BY



**Oldcastle Precast**  
P.O. BOX 688 ALBUQUA, WA 98071-0688  
PHONE 800-882-1236 FAX 253-735-4201

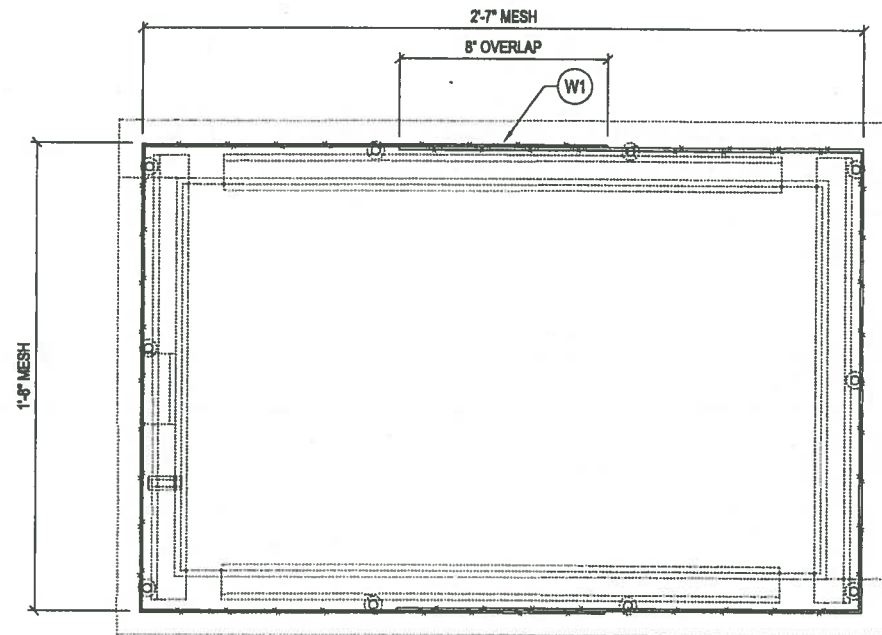
THIS DOCUMENT IS THE PROPERTY OF OLDCASTLE PRECAST, INC. IT IS CONFIDENTIAL, SUBMITTED FOR REFERENCE PURPOSES ONLY, AND SHALL NOT BE USED IN ANY WAY HARMFUL TO THE INTERESTS OF, OR WITHOUT THE WRITTEN PERMISSION OF OLDCASTLE PRECAST, INC. COPYRIGHT © 2018 OLDCASTLE PRECAST, INC. ALL RIGHTS RESERVED.

**TYPE 2 JUNCTION BOX w/ DP FRAME - WSDOT**  
LAYOUT DETAILS

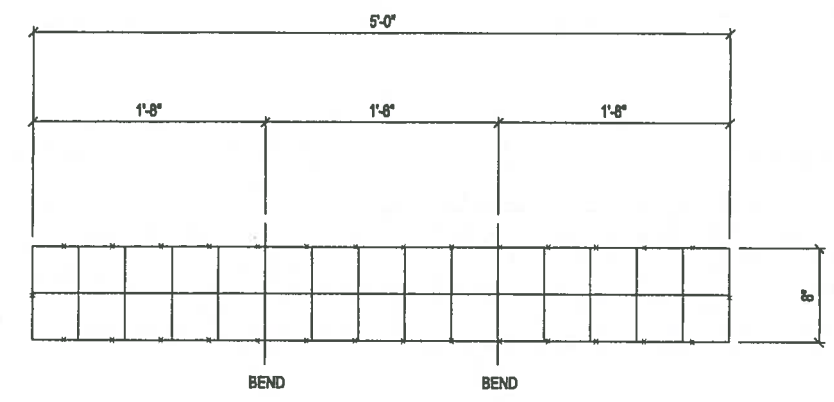
STANDARD PRODUCT  
CUSTOMER

DATE 4/5/18	SALES CJC	DRAWN CJC	ENGINEER	CHECKED	SALES ORDER
DRAWING NUMBER 010-0650115-001			REVISION REV DATE	SHEET 2 OF 3	

REINFORCEMENT CUT LIST				
#	QTY	MATERIAL	LENGTH	SHAPE
W1	2	MESH 4X4 - W2.9 X W2.9		BENT



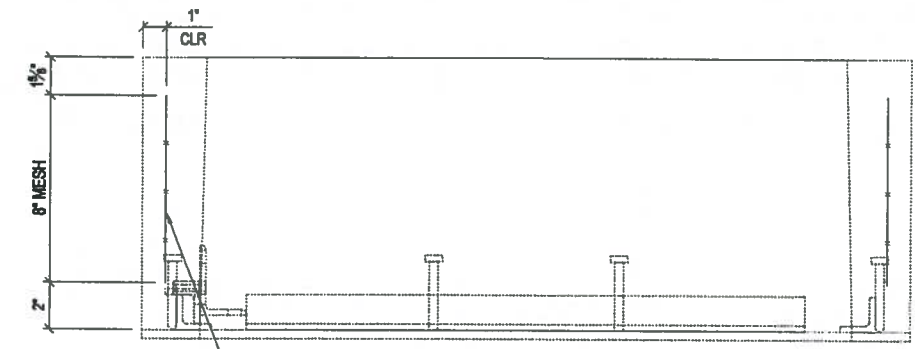
  
**PLAN VIEW**  
 REINFORCEMENT (SHOWN AS POURED)



**W1 DETAIL**  
 (OVERLAP = 8")

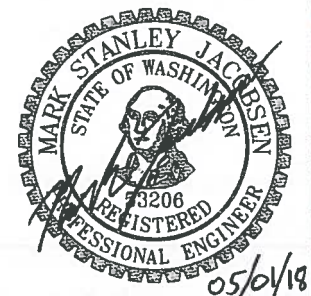
APPROVED


Washington State Department of Transportation  
 HQ Traffic Operations Office  
 BY: *AKJ* DATE: 12/6/2018



**VIEW A**  
 \*\*MESH WIRE TIED TO HEADED ANCHOR SHEAR STUD\*\*

REVISION	DESCRIPTION	BY
A	REVISED MESH OVERLAP IN PLAN VIEW	CJC





P.O. BOX 500 ALBUQU, WA 99071-0500  
 PHONE: 800-982-1838 FAX: 253-735-4301

THIS DOCUMENT IS THE PROPERTY OF OLDCASTLE PRECAST, INC. IT IS CONFIDENTIAL, SUBMITTED FOR REFERENCE PURPOSES ONLY, AND SHALL NOT BE USED IN ANY WAY BLATANT TO THE INTERESTS OF, OR WITHOUT THE WRITTEN PERMISSION OF OLDCASTLE PRECAST, INC. COPYRIGHT © 2018 OLDCASTLE PRECAST, INC. ALL RIGHTS RESERVED.

TYPE 2 JUNCTION BOX w/ DP FRAME - WSDOT

REINFORCEMENT DETAILS

STANDARD PRODUCT

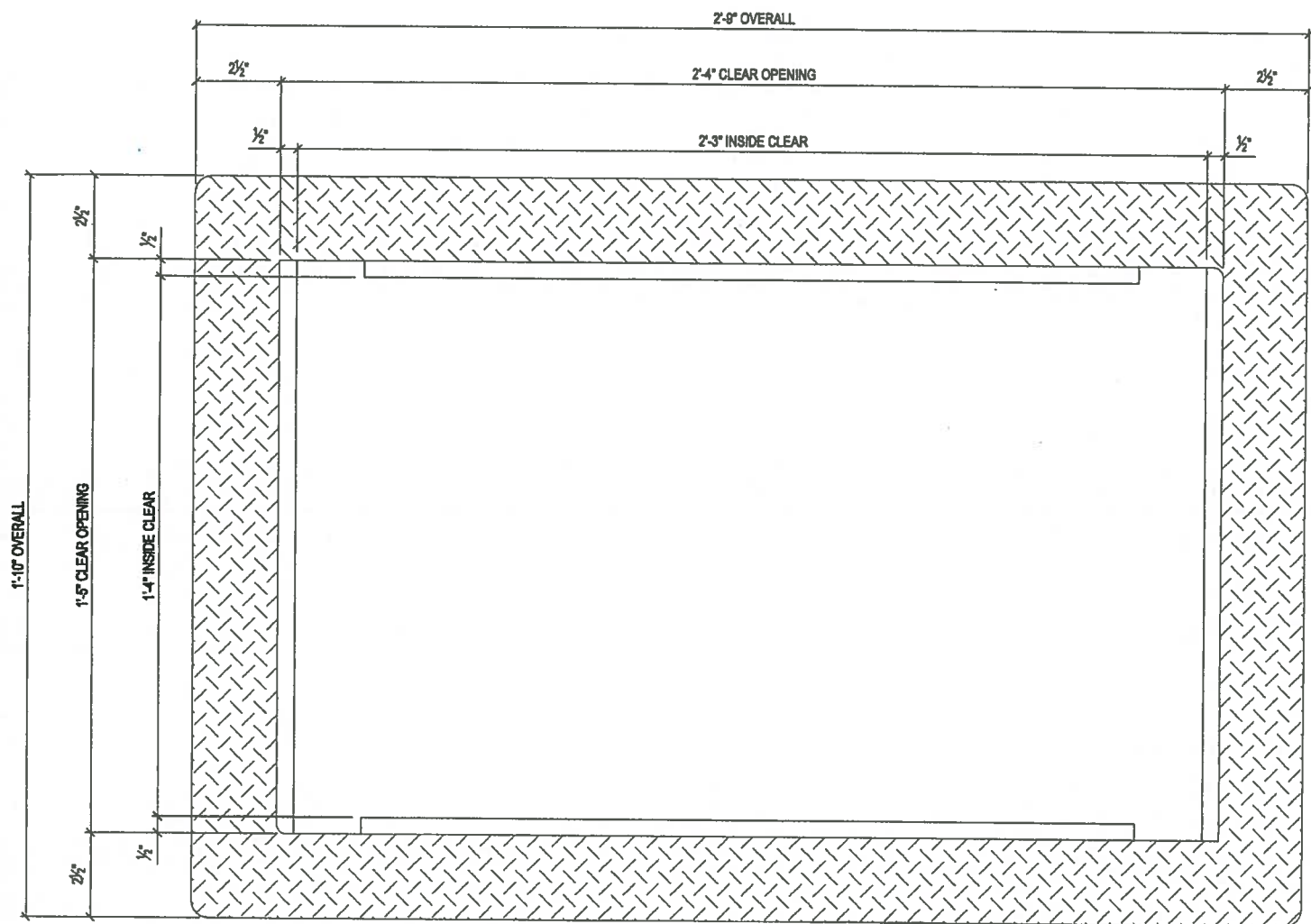
CUSTOMER

DATE	SALES	DRAWN	ENGINEER	CHECKED	SALES ORDER
4/5/18		CJC			

DRAWING NUMBER: **010-0650115-001**

REVISION: **A** REV DATE: **5/1/18**

SHEET: **3 OF 3**



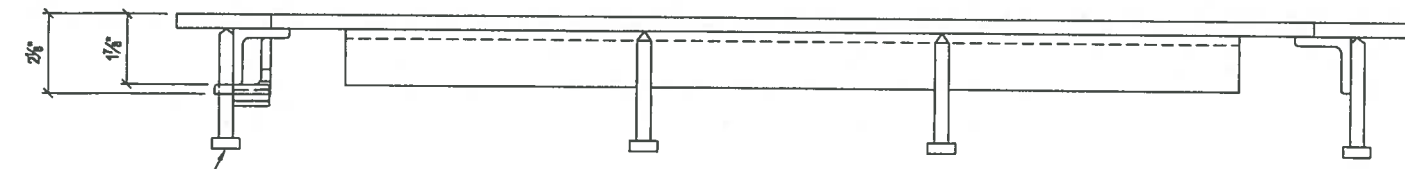
- STRUCTURAL NOTES**
1. PLATE: ASTM A786 STRUCTURAL STEEL STANDARDS
  2. STEEL SHAPES: ASTM A-36 STRUCTURAL STEEL STANDARDS
  3. ASSEMBLY: AWS D1.1 WELDING STANDARDS
  4. COATING: ASTM A123 HOT-DIP GALVANIZING STANDARDS

- GENERAL NOTES**
1. DOORS AVAILABLE TO USE WITH THIS FRAME:  
 2980375 - (TYPE 1 DP COVER - "ITS" -WSDOT)  
 2980377 - (TYPE 1 DP COVER - "COMM" -WSDOT)  
 2980379 - (TYPE 1 DP COVER - "LT" -WSDOT)  
 2980381 - (TYPE 1 DP COVER - "TS" -WSDOT)  
 2980383 - (TYPE 1 DP COVER - "TEL" -WSDOT)

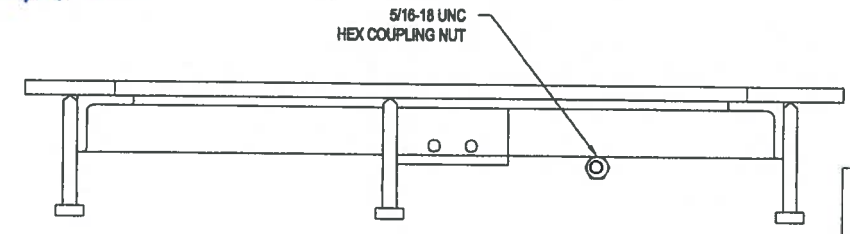
**A**  
PLAN VIEW

**APPROVED**  
 Washington State Department of Transportation  
 HQ Traffic Operations Office  
 BY: *[Signature]* DATE: *12/6/2018*

**B**



CONCRETE ANCHORS  
VIEW A



5/16-18 UNC  
HEX COUPLING NUT

VIEW B

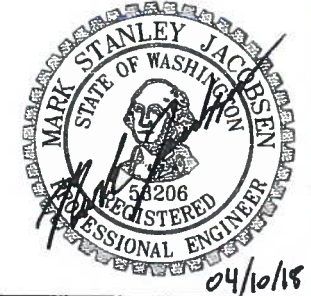


THIS DOCUMENT IS THE PROPERTY OF OLDCASTLE PRECAST, INC. IT IS CONFIDENTIAL, SUBMITTED FOR REFERENCE PURPOSES ONLY, AND SHALL NOT BE USED IN ANY WAY HARMFUL TO THE INTERESTS OF, OR WITHOUT THE WRITTEN PERMISSION OF OLDCASTLE PRECAST, INC. COPYRIGHT © 2018 OLDCASTLE PRECAST, INC. ALL RIGHTS RESERVED.

**TYPE 2 DP FRAME - WSDOT**  
CUSTOMER LAYOUT

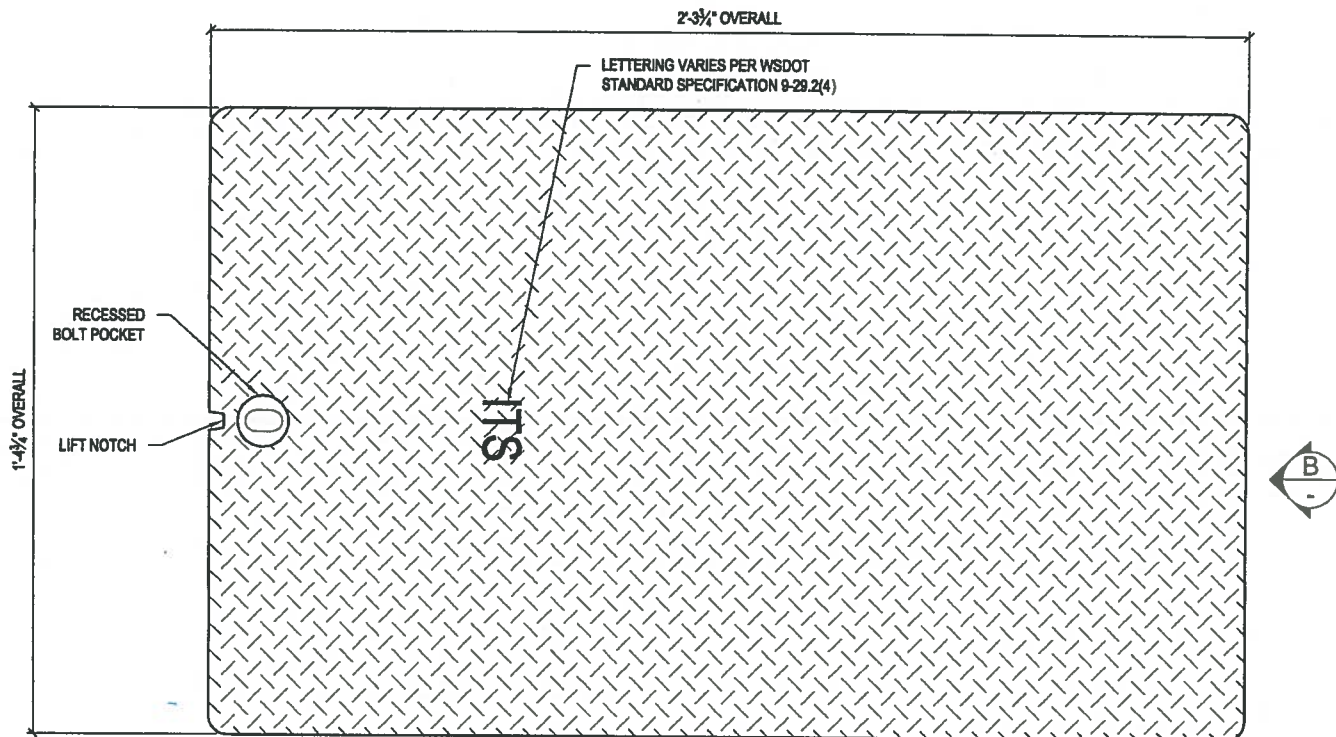
STANDARD PRODUCT  
CUSTOMER

DATE 4/5/18	SALES	DRAWN CJC	ENGINEER	CHECKED	SALES ORDER
DRAWING NUMBER 010-2980300-001		REVISION	SHEET 1 OF 2		
REV DATE					



REVISION	DESCRIPTION	BY





- STRUCTURAL NOTES**
1. PLATE: ASTM A786 STRUCTURAL STEEL STANDARDS
  2. STEEL SHAPES: ASTM A-36 STRUCTURAL STEEL STANDARDS
  3. ASSEMBLY: AWS D1.1 WELDING STANDARDS
  4. COATING: ASTM A123 HOT-DIP GALVANIZING STANDARDS

- GENERAL NOTES**
1. FRAMES AVAILABLE TO USE WITH THIS DOOR:  
2980300 (TYPE 2 DP FRAME - WSDOT)
  2. AVAILABLE DOOR LETTERING:  
2980377 - (TYPE 1 DP COVER - "COMM" - WSDOT)  
2980378 - (TYPE 1 DP COVER - "LT" - WSDOT)  
2980381 - (TYPE 1 DP COVER - "TS" - WSDOT)  
2980383 - (TYPE 1 DP COVER - "TEL" - WSDOT)



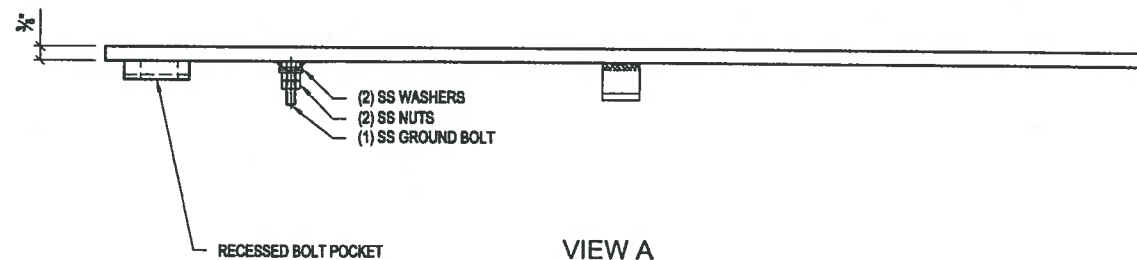
PLAN VIEW

**APPROVED**

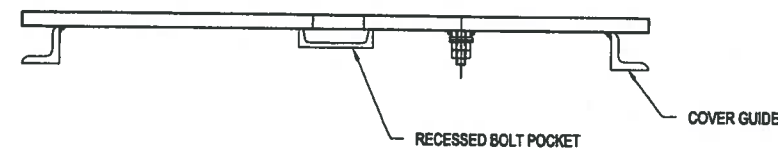
Washington State Department of Transportation  
HQ Traffic Operations Office

BY: [Signature] DATE: 12/6/2018

**ENGINEERS SEAL:**  
DOOR SHOP DRAWINGS REVIEWED FOR GENERAL CONFORMANCE TO THE INTENT OF WSDOT STANDARD PLAN J-40.10-04 ONLY. DOOR AND FRAME TO BE TESTED IN ACCORDANCE TO SECTION 9-29.2(5) OF THE WSDOT STANDARD SPECIFICATION TO ENSURE STRUCTURAL SUITABILITY.



VIEW A



VIEW B



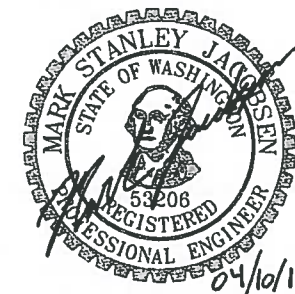
THIS DOCUMENT IS THE PROPERTY OF OLDCASTLE PRECAST, INC. IT IS CONFIDENTIAL, SUBMITTED FOR REFERENCE PURPOSES ONLY, AND SHALL NOT BE USED IN ANY WAY HARMFUL TO THE INTERESTS OF, OR WITHOUT THE WRITTEN PERMISSION OF OLDCASTLE PRECAST, INC. COPYRIGHT © 2018 OLDCASTLE PRECAST, INC. ALL RIGHTS RESERVED.

**TYPE 2 DP COVER - "ITS" - WSDOT**  
CUSTOMER LAYOUT

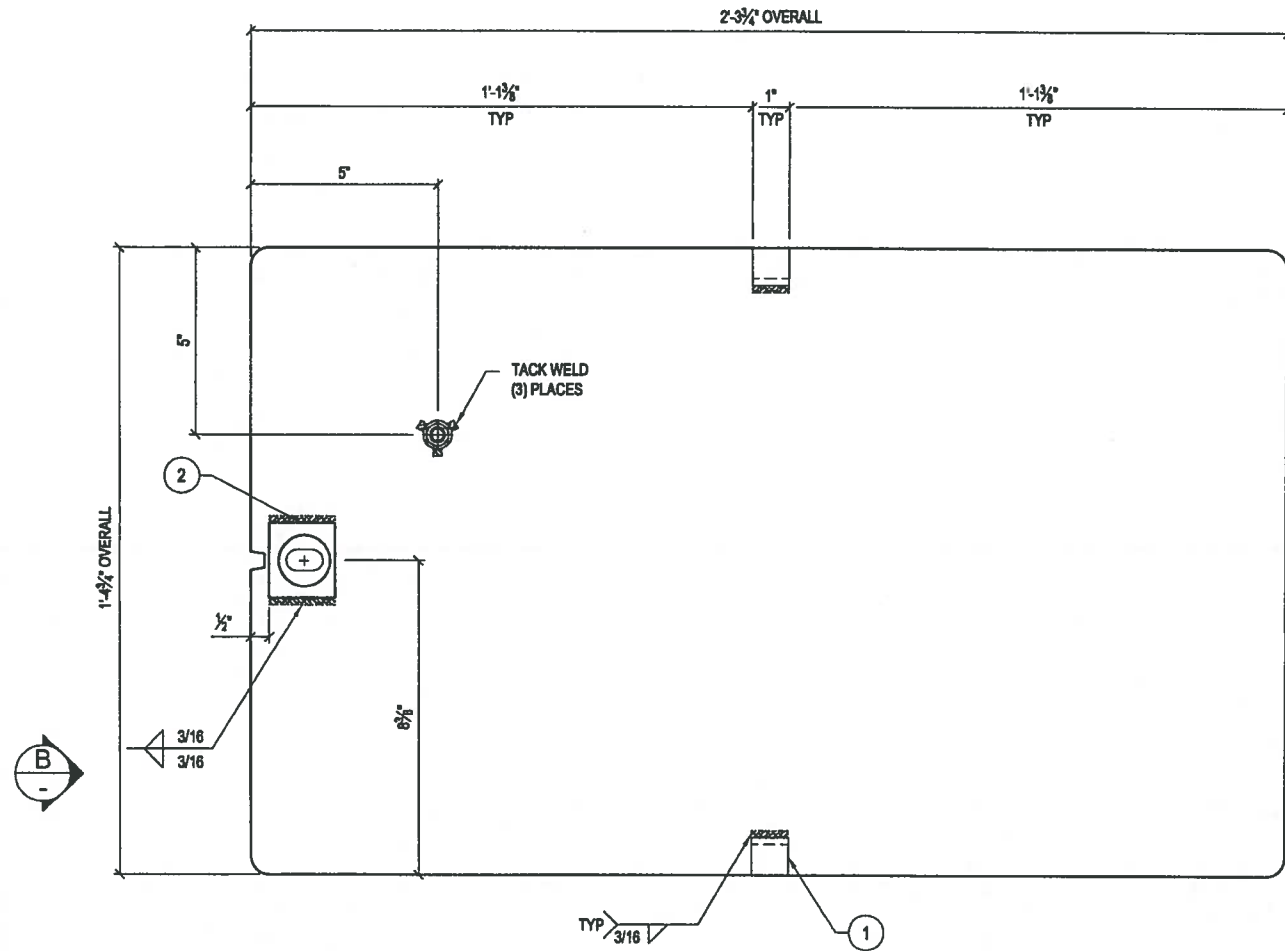
STANDARD PRODUCT

CUSTOMER

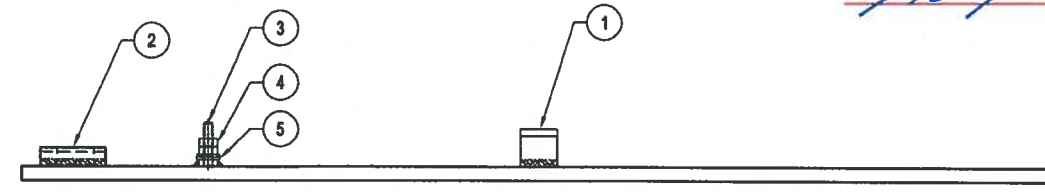
DATE	SALES	DRAWN	ENGINEER	CHECKED	SALES ORDER
4/5/18		CJC			
DRAWING NUMBER		REVISION		SHEET	
010-2980375-001		REV DATE		1 OF 2	



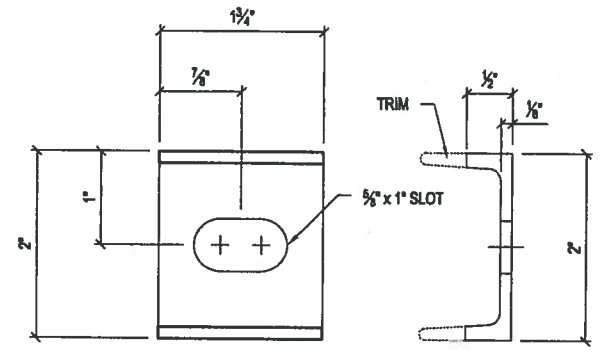
REVISION	DESCRIPTION	BY



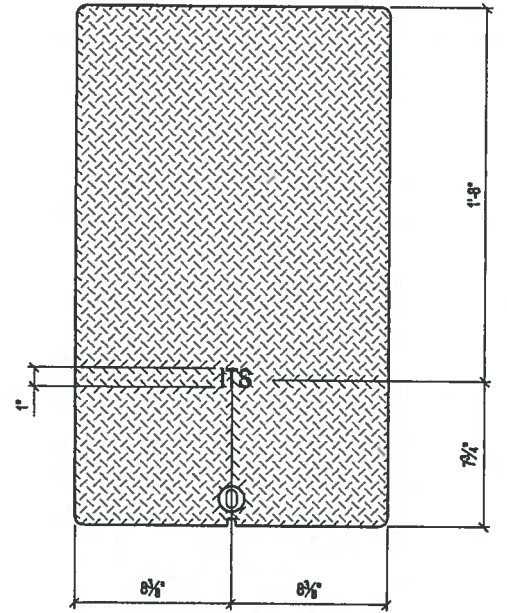
**PLAN VIEW**  
(UNDERSIDE OF COVER SHOWN)



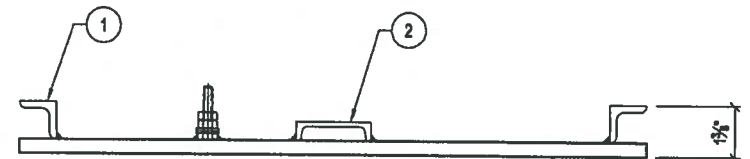
**VIEW A**



**PART No.2**



**LETTERING DETAIL**



**VIEW B**

- SHOP NOTES**
1. OVERALL DIMENSIONS HAVE A TOLERANCE OF  $\pm 1/16$ "
  2. ALL WELDS ARE  $3/16$ " FILLET UNLESS OTHERWISE NOTED
  3. GRIND ALL SHARP EDGES
  4. COVER TO BE HOT DIPPED GALVANIZED AFTER FABRICATION
  5. WEIGHT BEFORE GALVANIZING: 50 lbs

BILL OF MATERIALS			
#	QUANTITY	DESCRIPTION	ITEM #
	1 ea	DIAMOND PLATE 3/8" - TYPE 2 BD COVER PLATE	5441023
	0.19 lb	ANGLE 1" x 1" x 3/16"	5510200
	1 ea	CHANNEL 2" x 1" x 1/8"	5310045
	50 lb	GALVANIZING PER LB.	5800000
3	1 ea	1/4" -20 NC x 1" 18-8 SCREW - SS	5182029
4	2 ea	1/4" -20 NC FINISHED HEX NUT - SS	5182027
5	2 ea	1/4" 18-8 FLAT WASHER - SS	5182028

LAYOUT CUT LIST			
#	QUANTITY	DESCRIPTION	SIZE
1	2 ea	ANGLE 1" x 1" x 3/16"	0'-1"
2	1 ea	CHANNEL 2" x 1" x 1/8"	SHT 2

**APPROVED**  
Washington State Department of Transportation  
HQ Traffic Operations Office  
BY: *[Signature]* DATE: 12/6/2018

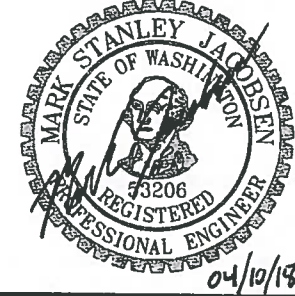
**ENGINEERS SEAL:**  
DOOR SHOP DRAWINGS REVIEWED FOR GENERAL CONFORMANCE TO THE INTENT OF WSDOT STANDARD PLAN J-40.10-04 ONLY. DOOR AND FRAME TO BE TESTED IN ACCORDANCE TO SECTION 9-29.2(5) OF THE WSDOT STANDARD SPECIFICATION TO ENSURE STRUCTURAL SUITABILITY.



THIS DOCUMENT IS THE PROPERTY OF OLDCASTLE PRECAST, INC. IT IS CONFIDENTIAL, SUBMITTED FOR REFERENCE PURPOSES ONLY, AND SHALL NOT BE USED IN ANY WAY SUBJECT TO THE INTERESTS OF, OR WITHOUT THE WRITTEN PERMISSION OF OLDCASTLE PRECAST, INC. COPYRIGHT © 2015 OLDCASTLE PRECAST, INC. ALL RIGHTS RESERVED.

**TYPE 2 DP COVER - "ITS" - WSDOT**  
ASSEMBLY AND WELD DETAILS

STANDARD PRODUCT					
CUSTOMER					
DATE	SALES	DRAWN	ENGINEER	CHECKED	SALES ORDER
4/5/18		CJC			
DRAWING NUMBER			REVISION		
010-2980375-001			BRIEF		
			REV DATE		
			2 OF 2		



REVISION	DESCRIPTION	BY