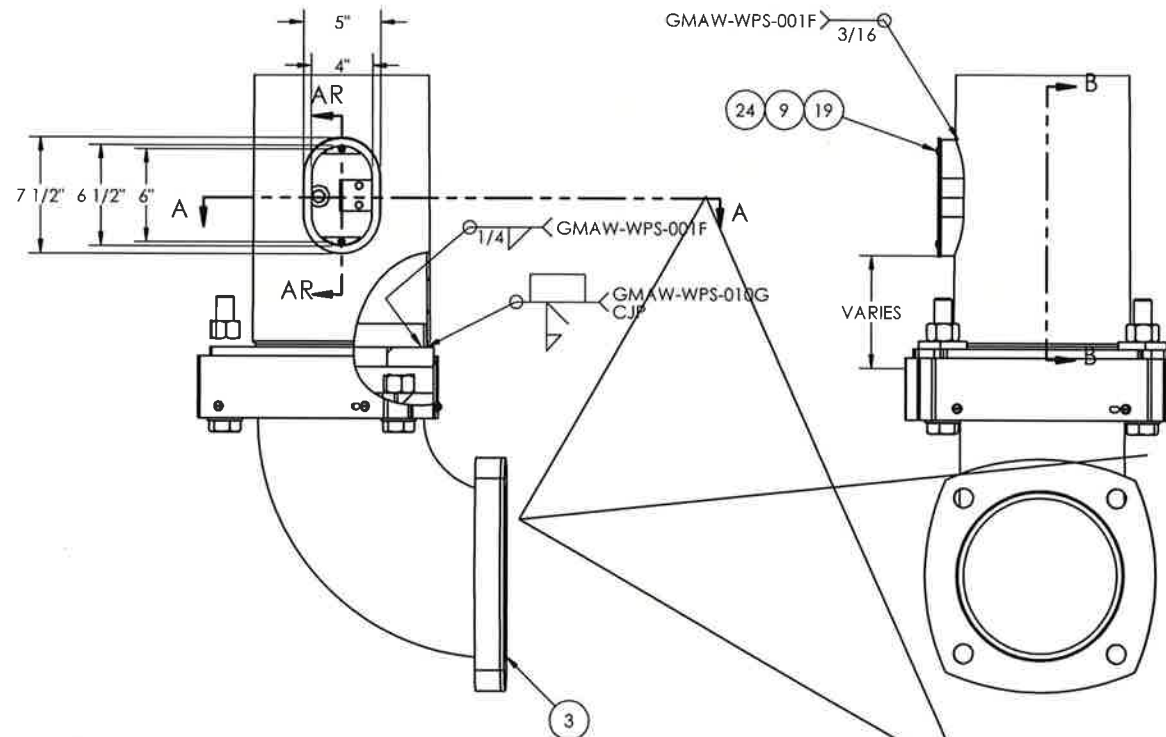
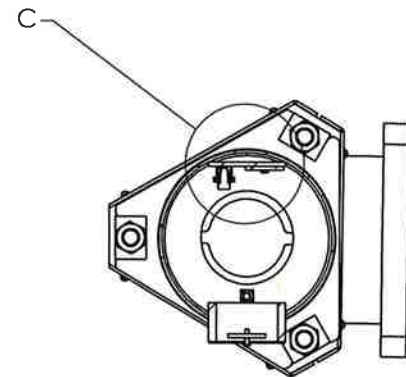


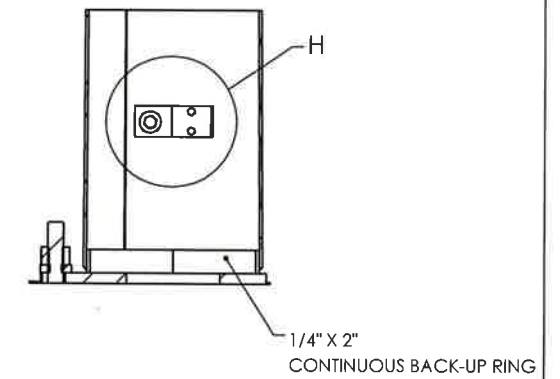
SECTION AR-AR
SCALE 1 : 12



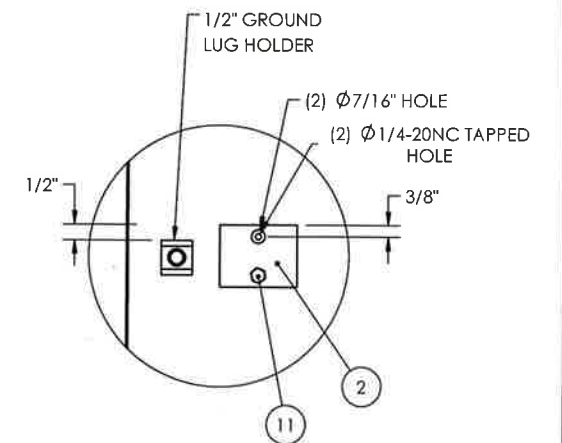
1/4" THK X 15", SQUARE "FABREEKA"
FABRIC PAD WITH 5" DIA CENTER HOLE
AND (4) 1 1/4" DIA BOLT HOLES FOR
1" DIA BOLTS.
CONTRACTOR TO CEMENT TO FLANGE
PLATE AND TRIM OUTSIDE EDGES FLUSH



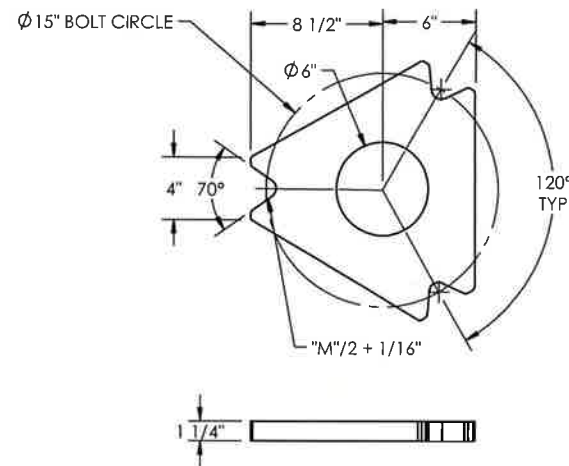
SECTION A-A
SCALE 1 : 12



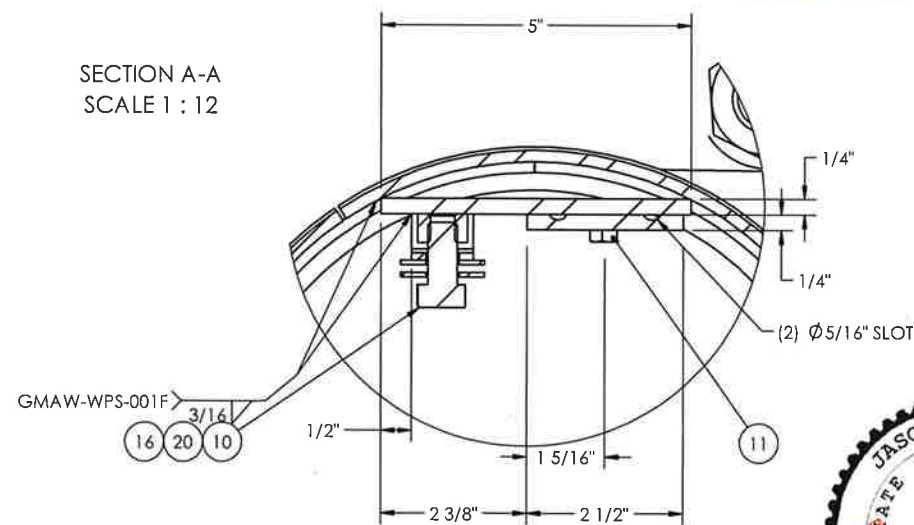
SECTION B-B
SCALE 1 : 12



DETAIL H
SCALE 1 : 6



POST BASE PLATE DETAIL



DETAIL C
SCALE 1 : 3

APPROVED
Manufacturer's Pole Plan
Approved For Listing As A
Pre-Approved Drawing.
WSDOT Bridge & Structures Office
By GB Date 9-14-2020



8-18-20 (EXPIRES 12-18-21)

MILLERBERND		622 6TH ST. SO. WINSTED, MN 55395	
THIS DOCUMENT CONTAINS CONFIDENTIAL INFORMATION AND IS THE PROPERTY OF MILLERBERND MFG AND MAY NOT BE COPIED, REPRODUCED OR DISCLOSED IN ANY MATTER WITHOUT THE EXPRESS WRITTEN CONSENT FROM MILLERBERND MFG			
SALES ORDER NO.:	QTY:	STATE:	SHEET
74515	-	WA	2 OF 3
DESCRIPTION: SUB POLE LIGHT RD TYPE 1 - ELBOW			
EST. WEIGHT:		DRAWING NO:	
		74515-WA-LP1-ELBOW	
PROJECT NAME: STATE OF WASHINGTON LIGHT POLES TYPE 1			
PROJECT LOCATION: WA			
PROJECT NO.:		CONTROL/CONTRACT NO.:	
DWN BY: REBEKAH		DATE: 2/20/17	
CHK BY:		DATE:	

"M" DIA X 8 1/2" LG BOLTS
(A449) GALVANIZED - FULLY
THREADED. EACH BOLT FURNISHED
WITH (2) HVY HEX NUTS, (2) PLATE WASHERS
AND (1) STANDARD ROUND WASHER

14 23 1 13

3/16" X 4"
STEEL BAND
TO FIT (3 REQ'D)

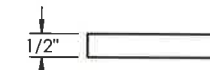
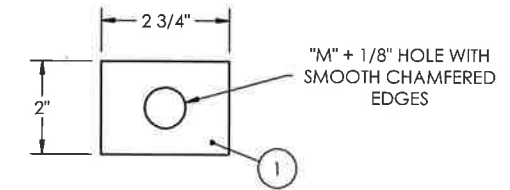
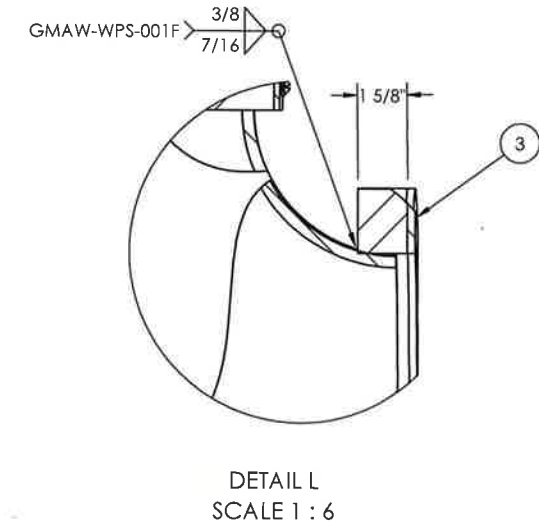
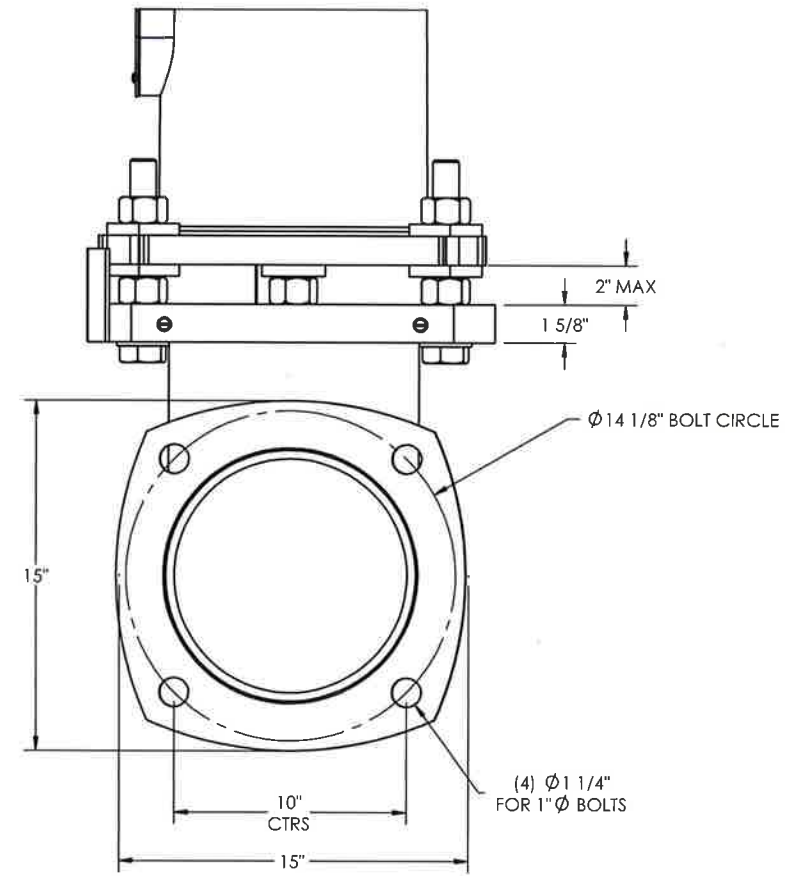
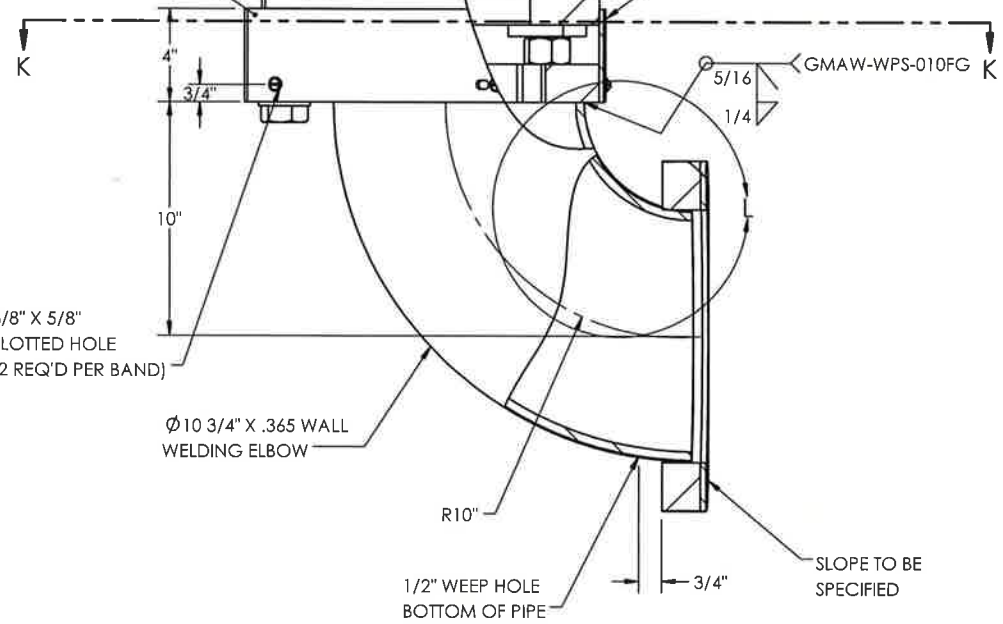
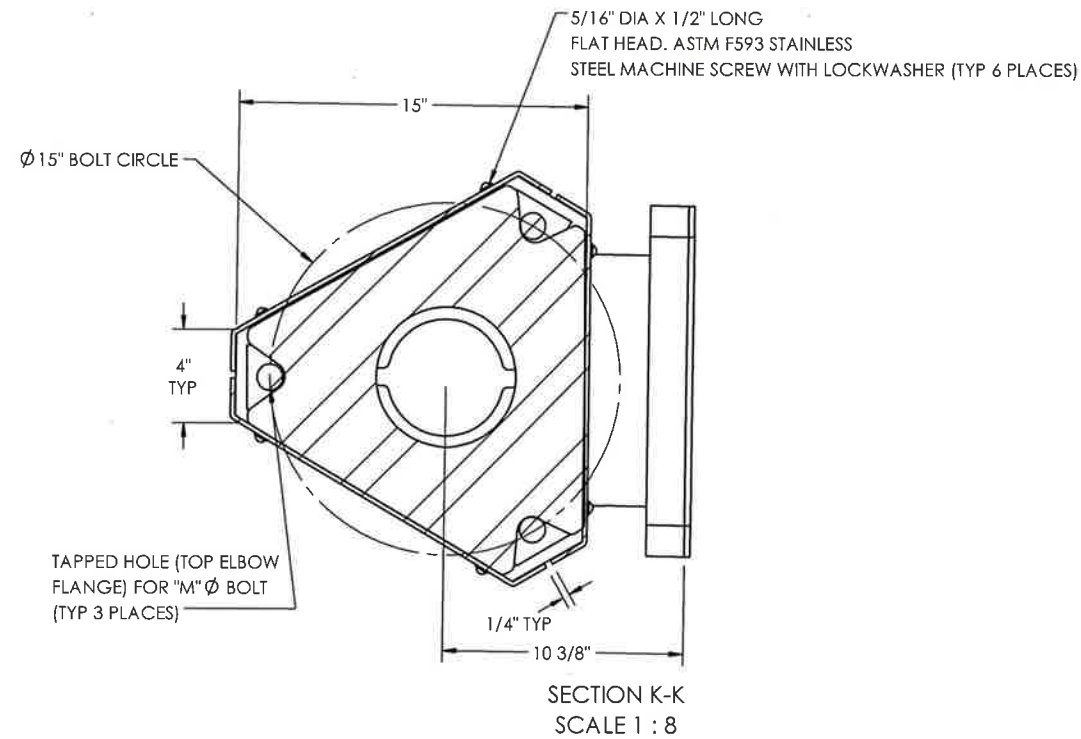


PLATE WASHER DETAIL



APPROVED
Manufacturer's Pole Plan
Approved For Listing As A
Pre-Approved Drawing
WSDOT Bridge & Structures Office
By GB Date 9-14-2020



8-18-20 (EXPIRES 12-18-21)

		622 6TH ST. SO. WINSTED, MN 55395	
THIS DOCUMENT CONTAINS CONFIDENTIAL INFORMATION AND IS THE PROPERTY OF MILLERBERND MFG AND MAY NOT BE COPIED, REPRODUCED OR DISCLOSED IN ANY MANNER WITHOUT THE EXPRESS WRITTEN CONSENT FROM MILLERBERND MFG			
SALES ORDER NO.:	QTY:	STATE:	SHEET
74515	-	WA	3 OF 3
DESCRIPTION: SUB POLE LIGHT RD TYPE 1 - ELBOW			
EST. WEIGHT:		DRAWING NO: 74515-WA-LP1-ELBOW	
PROJECT NAME: STATE OF WASHINGTON LIGHT POLES TYPE 1			
PROJECT LOCATION: WA			
DWN BY: REBEKAH		DATE: 2/20/17	
CHK BY:		DATE:	