

Washington State Ferries 2040 Long Range Plan

Policy Advisory Group

Stephanie Cirkovich, WSF Community Services and Planning Director
Ray Deardorf, WSF Senior Planning Manager

July 27, 2017

Agenda

- Welcome and introductions
- Background and legislative direction
- Long Range Plan overview
- Discussion
- Stakeholder engagement
- Timeline
- Review Policy Advisory Group roles
- Next steps

Meeting Objectives

1. Kick-off the Washington State Ferries Long Range Plan Advisory Group
2. Clarify Long Range Plan focus and scope
3. Agreement on Policy Advisory Group roles
4. Gather input on key areas of interest and priorities for the plan

Washington State Ferries

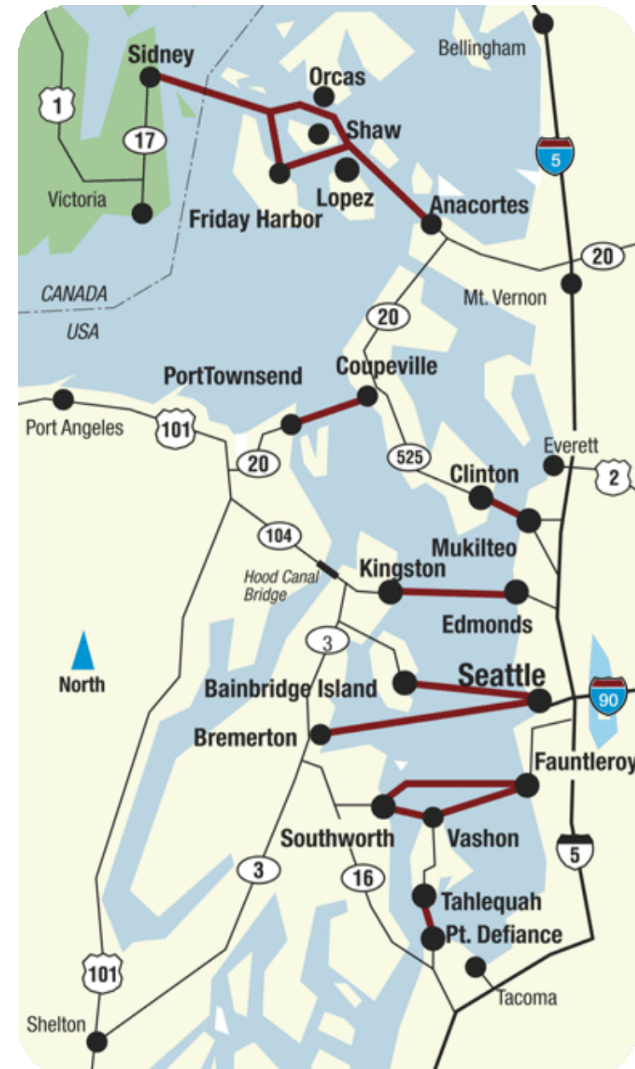
Overview

The largest ferry system in the U.S.

- Third largest transit system in Washington State

One of the largest auto ferry systems in the world

- 23 auto-passenger ferries
- 10 routes serving 20 terminals
- 24.2 million annual riders
- 10.5 million annual vehicles
- 450 sailings per day
- 1,800 employees



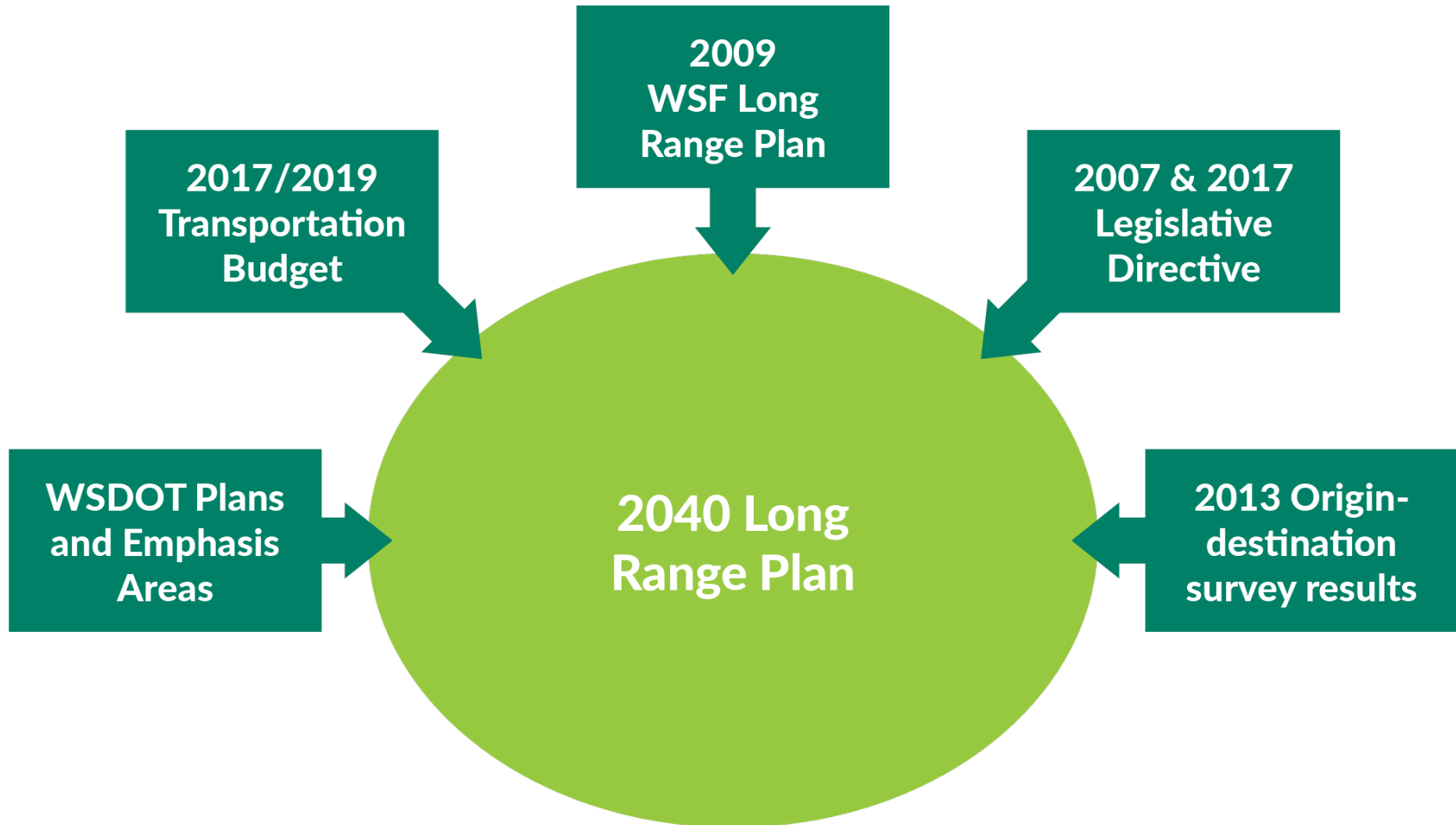
Long Range Plan Background

WSF Plan Date	Horizon	Emphasis
1999	2015	<ul style="list-style-type: none">Expanding the system
2009	2030	<ul style="list-style-type: none">Maximize use of existing resources
2019	2040	<ul style="list-style-type: none">Scoping process underway

2040 plan will focus on:

- Improving connections and planning for future cross sound transportation
- Developing practical solutions for future ferry service
- Managing vehicle demand before adding capacity

What is required in the 2040 plan?



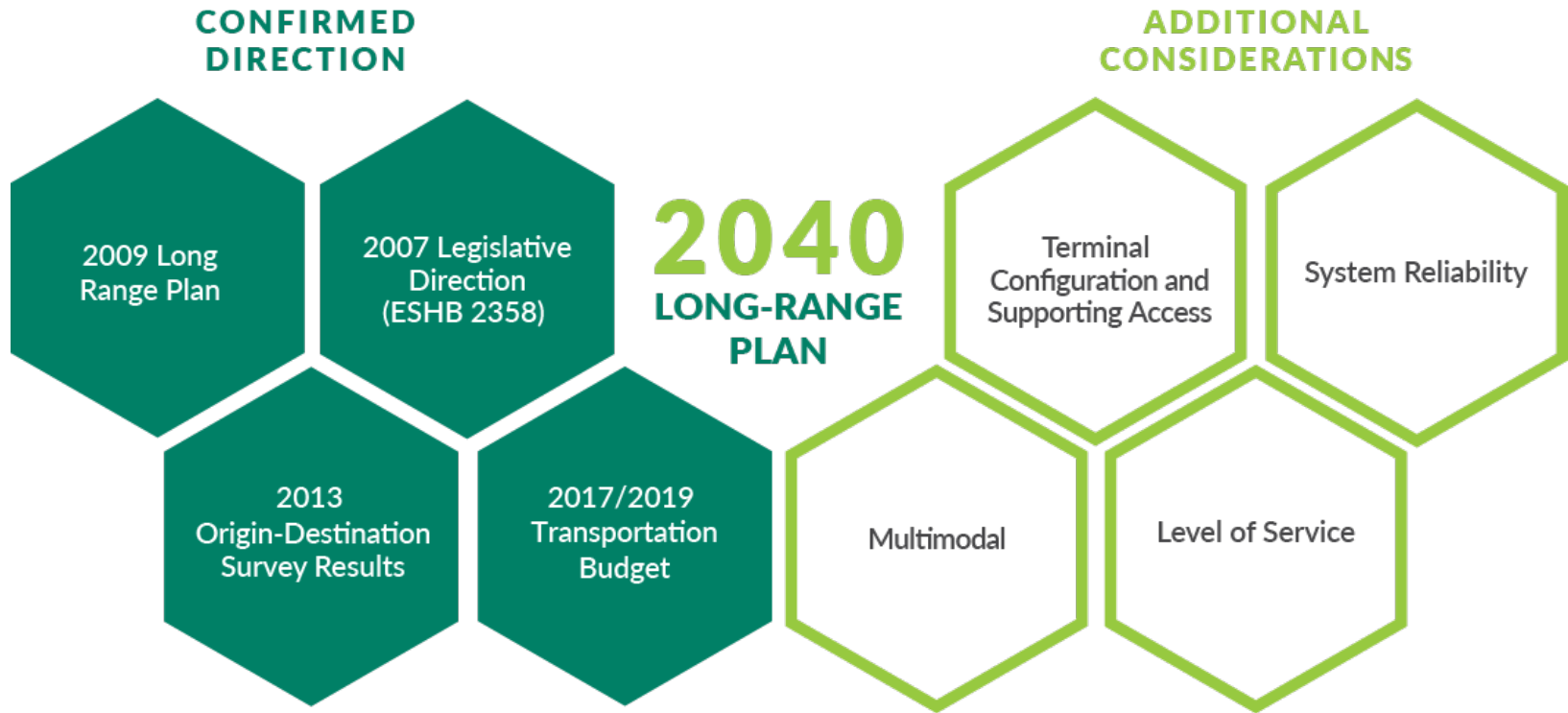
Progress Report

2009 Long Range Plan presented a vision for the future of the ferry system. What we have accomplished:

- Studied and implemented vehicle reservation systems
- Improved customer web experience for easier trip planning
- Building Mukilteo and Colman Dock ferry terminals
- Implemented pricing strategies to maximize use of vehicles space
- Built new vessels



Potential Topics



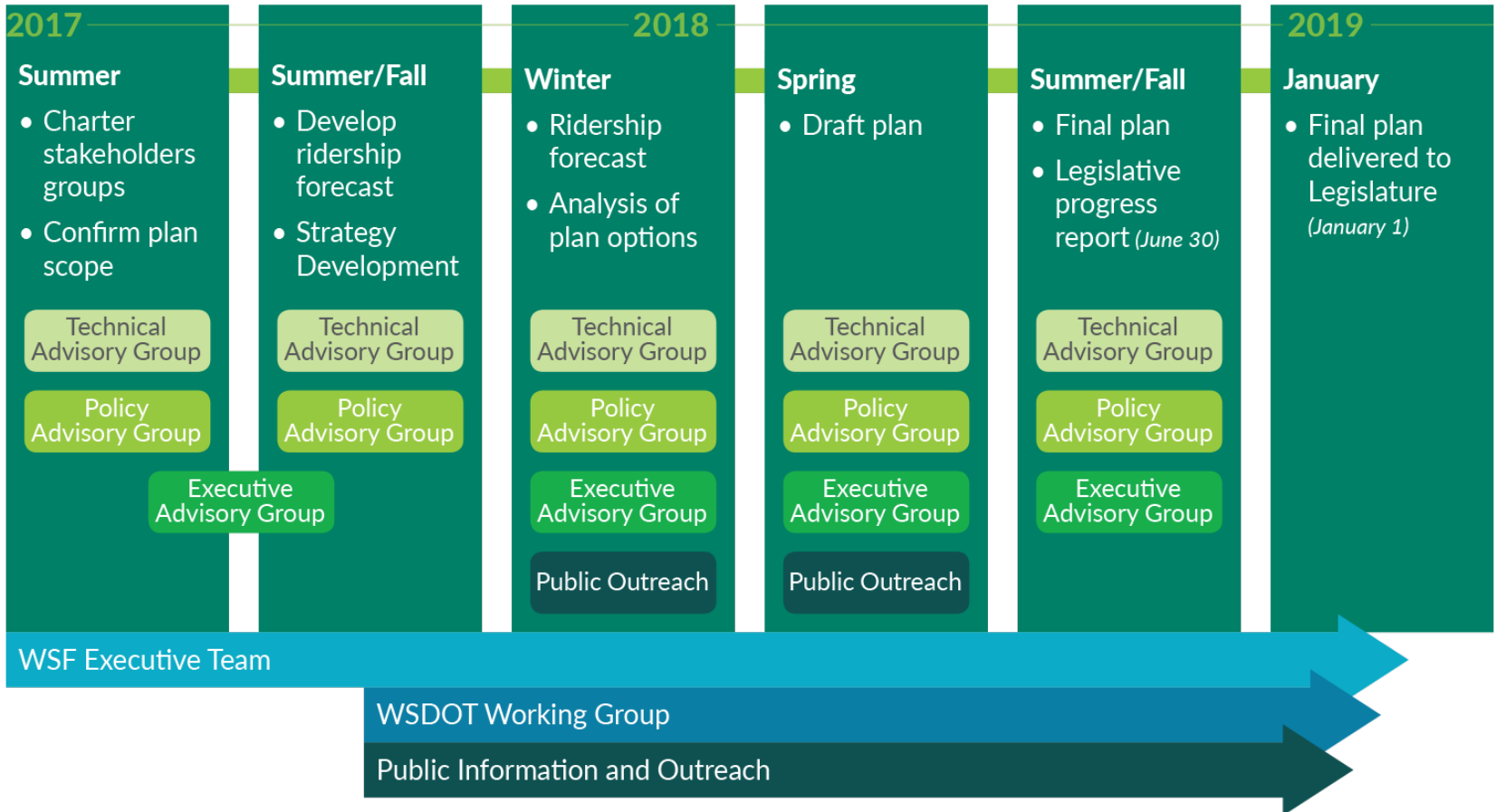
Discussion Questions

- Do you have any questions or comments on the overview information presented today?
- What are your key interests for the Washington State Ferries 2040 Long Range Plan?

Stakeholder Engagement



Timeline



Policy Advisory Group Roles

The role of the Policy Advisory Group is to:

- Provide strategic advice on how to prioritize needs
- Represent group's or communities' interests and concerns
- Help disseminate plan updates and public involvement opportunities to key audiences
- Review and provide feedback on draft plan elements
- Collaboratively engage with other PAG members
- Assist in building/maintaining support for the plan

Policy Advisory Group Roles

The WSF project team will:

- Provide background materials, data, and public input
- Respond to questions and requests quickly and as thoroughly as possible
- Attend PAG meetings to answer questions and inform discussion
- Consider and address PAG input when developing the plan
- Report back to PAG members on how the project team considered and addressed input in the final plan

Look ahead

- WSF develops plan scope and hires consultant
- Next PAG meeting: September