

# Washington State Ferries 2040 Long Range Plan

## Technical Advisory Group

Ray Deardorf, WSF Senior Planning Manager

Carmen Bendixen, Senior Transportation Planner

Stephanie Cirkovich, WSF Community Services and Planning Director

Hadley Roderio, Strategic Communications Manager

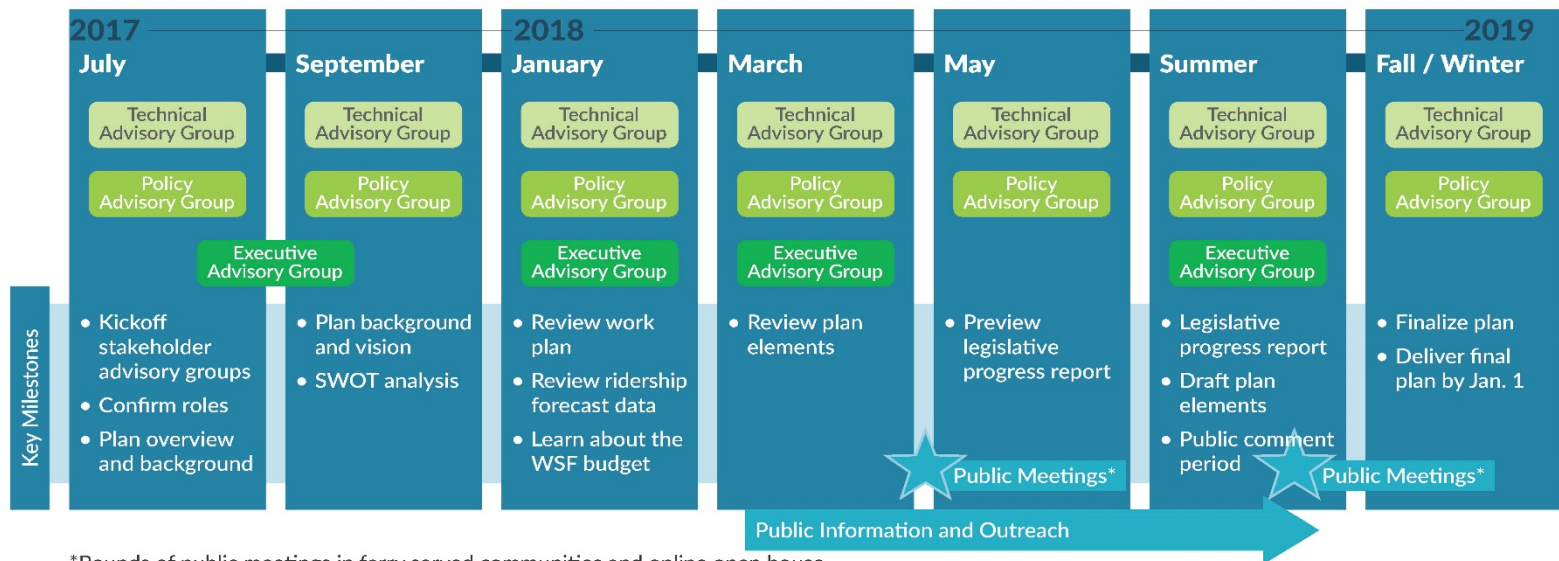
March 15, 2018

# Agenda

- Welcome and introductions
- Open house preview
  - Public meeting goals and schedule
  - Notification plan / poster
  - Meeting plan / materials
- Breakout discussion groups
  - Overview of key plan elements and facilitated small group discussions
- Next steps

# Open house goals

- The purpose of the open houses is to:
  - Learn about Washington State Ferries' Long Range Plan
  - Share your ideas and help WSF identify priorities and considerations that should be included in the Long Range Plan
  - Meet the project team and ask questions



\*Rounds of public meetings in ferry served communities and online open house.

# Open house schedule

Date	Community	Time	Location
April 17	Bainbridge Island	5:30-7:30 pm	Bainbridge Island Senior Center
April 19	Port Townsend	5-7 pm	Cotton Building
April 24	Vashon Island	6-8 pm	Vashon Island High School
April 25	Bremerton	5:30-7:30pm	Kitsap Conference Center
April 26	Southworth	6 -8 pm	John Sedgwick Jr. High School
May 1	Clinton	5:30-7:30 pm	Clinton Community Hall
May 2	San Juan Islands	3:30-6:00 pm	Brickworks
May 8	Kingston	6-8 pm	Kingston Village Green Community Center
May 17	Fauntleroy	6-8 pm	Fauntleroy Church

**Online open house:** April 10 – May 11 at [WSFlongrangeplan.com](http://WSFlongrangeplan.com)

# Help us get the word out!

Open houses will be advertised through the following channels:

- Posters on vessels, in terminals, and distributed to community partners
- Press release
- Email alerts
- WSF Website
- Social media
- Assist. Secretary Amy Scarton's Weekly Update

## Help shape the future of Washington State Ferries

Ferry ridership is expected to grow 30 percent by 2040. Washington State Ferries (WSF) is developing a Long Range Plan to better understand and plan for the changing needs of the system through 2040.

Photo by ferry rider ©Garth Henson, used with permission.

### Attend an open house

<b>Bainbridge Island</b> Tuesday, April 17 5:30 - 7:30 p.m. Bainbridge Island Senior Center, 270 Brien Drive SE, Bainbridge Island	<b>Clinton</b> Thursday, May 1 5:30 - 7:30 p.m. Clinton Community Hall, 6411 South Central Avenue, Clinton
<b>Port Townsend</b> Thursday, April 19 5 - 7 p.m. Cotton Building, 607 Water Street, Port Townsend	<b>San Juan Islands</b> Wednesday, May 2 5:30 - 6 p.m. Bridgeway, 150 Nichols Street, Friday Harbor
<b>Vashon Island</b> Tuesday, April 24 6 - 8 p.m. Nelson Island High School, 9900 SW 204th Street, Vashon	<b>Kingston</b> Wednesday, May 9 6 - 8 p.m. Kingston Village Green Community Center, 26159 Duley Road NE, Kingston
<b>Bremerton</b> Wednesday, April 25 5:30 - 7:30 p.m. Knap Conference Center, 200 Washington Avenue, Bremerton	<b>Fairfieldway</b> Thursday, May 17 6 - 8 p.m. Fairfieldway Church, 9140 California Avenue SW, Seattle
<b>Southworth</b> Thursday, April 26 6 - 8 p.m. John Sedwick Jr. High, 8995 SE Sedwick Road, Port Orchard	

Stop by anytime to learn about the plan and share your ideas. There will not be a formal presentation.

### Join us at an open house to:

- Learn more about the WSF 2040 Long Range Plan
- Share your ideas and help WSF identify priorities and considerations that should be included in the Long Range Plan
- Meet the project team to ask questions

### Participate online:

View open house materials and provide comments at our online open house from April 30 - May 11 at: [WSFLongRangePlan.com](http://WSFLongRangePlan.com)

### Questions?

Contact us: [WSFLongRangePlan@WSDOT.wa.gov](mailto:WSFLongRangePlan@WSDOT.wa.gov)

## Washington State Ferries 2040 Long Range Plan

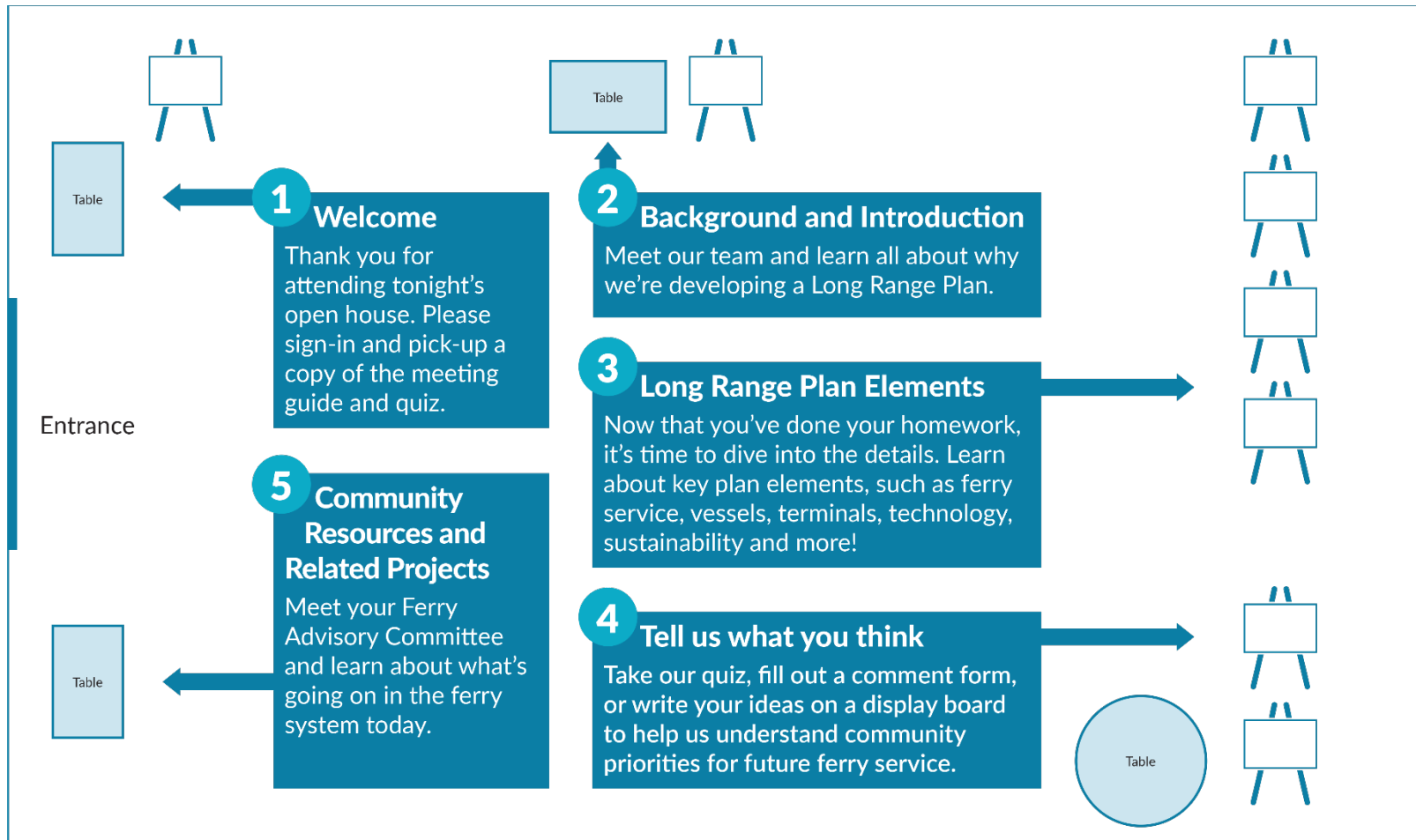
Washington State Ferries WSDOT

WSDOT issues permits, businesses and the economy moving by operating and improving the state's transportation systems. To learn more about what we're doing, go to [wstate.wa.gov/transportation](http://wstate.wa.gov/transportation) for pictures, videos, news and blogs. Real time traffic information is available at [wstate.com/traffic](http://wstate.com/traffic) or by dialing 511.

Americans with Disabilities Act (ADA) Information: Accommodation requests for people with disabilities can be made by contacting the WSDOT Diversity/ADA Affairs team at [wstate@wstate.wa.gov](mailto:wstate@wstate.wa.gov) or by calling toll-free, (877) 662-4426. Persons who are deaf or hard of hearing may make a request by calling the Washington State Relay at 711.

Title VI Statement to Public: It is WSDOT's policy to assure that no person shall, on the grounds of race, color, national origin or sex, be provided by Title VI of the Civil Rights Act of 1964, be excluded from participation in, be denied the benefits of, or be otherwise discriminated against under any of its federally funded programs and activities, any person who believes his or her Title VI protection has been violated may file a complaint with WSDOT's Office of Equal Opportunity. For additional information regarding Title VI complaint procedures and/or information regarding our non-discrimination obligations, please contact OEO's Title VI Coordinator at 562-705-7000.

# Open house plan



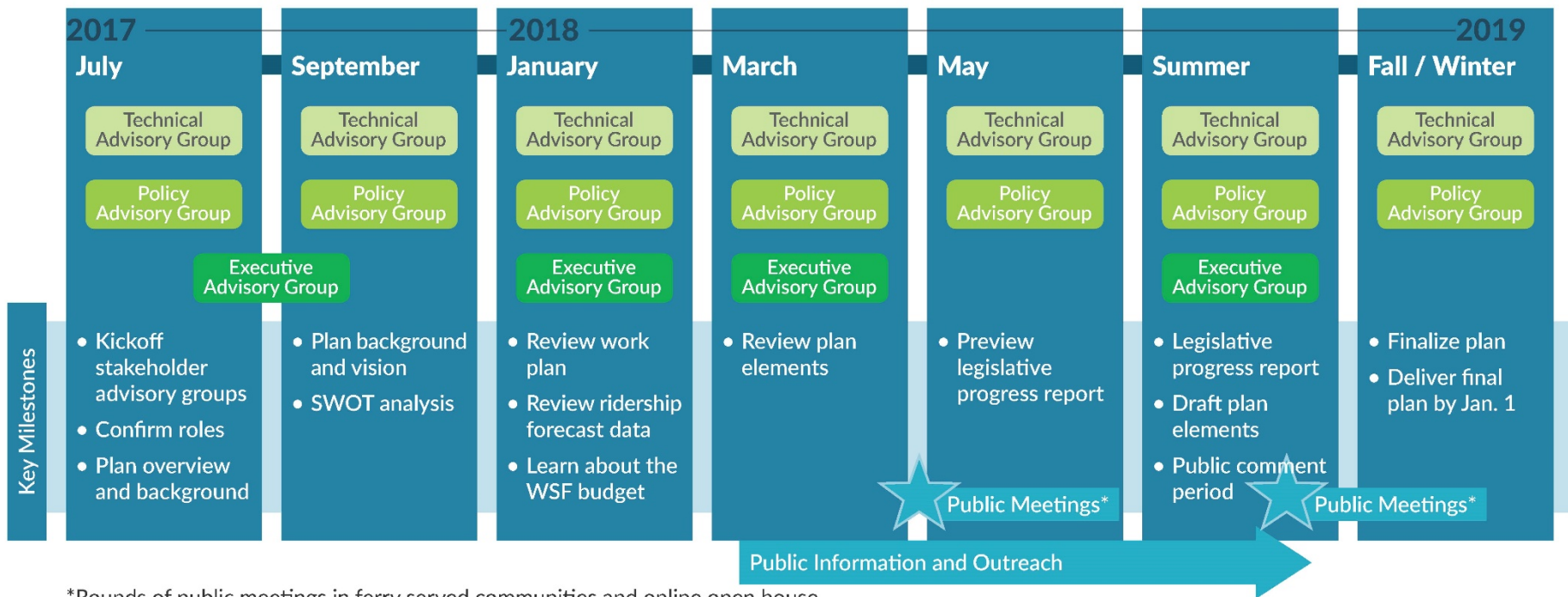
# Small group discussion

Small group discussions about key plan elements:

- Ferry service
- Vessels
- Terminals
- Performance metrics and level of service standards

# Look ahead

- Next TAG meeting: May



\*Rounds of public meetings in ferry served communities and online open house.